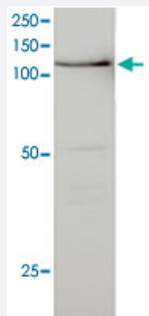


BUB1 monoclonal antibody, clone P8.14H5.1H1

Catalog # MAB8963

Size 100 ug

Applications



Western Blot (Cell lysate)

Western blot analysis in HeLa nuclear with BUB1 monoclonal antibody, clone P8.14H5.1H1 (Cat # MAB8963).

Specification

Product Description	Mouse monoclonal antibody raised against BUB1.
Amount	100 uL
Immunogen	Recombinant GST fusion protein corresponding to C-terminus (642 amino acids) of human BUB1.
Host	Mouse
Reactivity	Human
Form	Liquid
Purification	Purified ascites
Concentration	1 ug/uL
Isotype	IgG1
Recommend Usage	The optimal working dilution should be determined by the end user.
Storage Buffer	In PBS, pH 7.4 (0.02% sodium azide)

Storage Instruction

Store at -20°C.
Aliquot to avoid repeated freezing and thawing.

Applications

- Western Blot (Cell lysate)

Western blot analysis in HeLa nuclear with BUB1 monoclonal antibody, clone P8.14H5.1H1 (Cat # MAB8963).

- Immunofluorescence

- Immunoprecipitation

Gene Info — BUB1

Entrez GeneID	699
---------------	---------------------

Gene Name	BUB1
-----------	------

Gene Alias	BUB1A, BUB1L, hBUB1
------------	---------------------

Gene Description	budding uninhibited by benzimidazoles 1 homolog (yeast)
------------------	---

Omim ID	602452
---------	------------------------

Gene Ontology	Hyperlink
---------------	---------------------------

Gene Summary	This gene encodes a kinase involved in spindle checkpoint function. The kinase functions in part by phosphorylating a member of the mitotic checkpoint complex and activating the spindle checkpoint. Mutations in this gene have been associated with aneuploidy and several forms of cancer. [provided by RefSeq]
--------------	---

Other Designations	BUB1 budding uninhibited by benzimidazoles 1 homolog budding uninhibited by benzimidazoles 1 mitotic spindle checkpoint kinase putative serine/threonine-protein kinase
--------------------	---

Pathway

- [Cell cycle](#)

Disease

- [Alcoholism](#)
- [Breast cancer](#)
- [Breast Neoplasms](#)
- [Carcinoma](#)
- [Conduct Disorder](#)
- [Genetic Predisposition to Disease](#)
- [Ovarian Neoplasms](#)