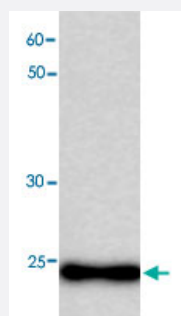


# MB monoclonal antibody, clone 34h5

Catalog # MAB8867      Size 100 uL

## Applications



### Western Blot (Recombinant protein)

Western blot analysis in MB recombinant protein with MB monoclonal antibody, clone 34h5 (Cat # MAB8867) at 1 : 1000 dilution.

## Specification

**Product Description** Mouse monoclonal antibody raised against full length recombinant MB.

**Amount** 100 uL

**Immunogen** Recombinant protein corresponding to full length human MB.

**Host** Mouse

**Reactivity** Human

**Specificity** This antibody recognizes recombinant protein MGB.

**Form** Liquid

**Purification** Affinity purification

**Concentration** 1 ug/uL

**Isotype** IgG1

**Recommend Usage** The optimal working dilution should be determined by the end user.

**Storage Buffer** In citrate-Tris-HCl, pH7.0 (0.02% Proclin 300)

**Storage Instruction**

Store at -20°C.

Aliquot to avoid repeated freezing and thawing.

## Applications

- Western Blot (Recombinant protein)

Western blot analysis in MB recombinant protein with MB monoclonal antibody, clone 34h5 (Cat # MAB8867) at 1 : 1000 dilution.

- Enzyme-linked Immunoabsorbent Assay

## Gene Info — MB

Entrez GeneID	<a href="#">4151</a>
---------------	----------------------

Protein Accession#	<a href="#">NM_005368.2</a>
--------------------	-----------------------------

Gene Name	MB
-----------	----

Gene Alias	MGC13548, PVALB
------------	-----------------

Gene Description	myoglobin
------------------	-----------

Omim ID	<a href="#">160000</a>
---------	------------------------

Gene Ontology	<a href="#">Hyperlink</a>
---------------	---------------------------

Gene Summary	This gene encodes a member of the globin superfamily and is expressed in skeletal and cardiac muscles. The encoded protein is a haemoprotein contributing to intracellular oxygen storage and transcellular facilitated diffusion of oxygen. At least three alternatively spliced transcript variants encoding the same protein have been reported. [provided by RefSeq]
--------------	--

Other Designations	-
--------------------	---