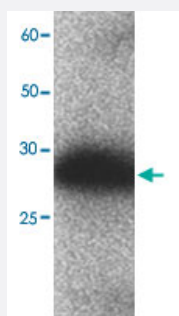


SERPINB4 monoclonal antibody, clone 6s40

Catalog # MAB8849

Size 100 uL

Applications



Western Blot (Recombinant protein)

Western blot analysis in SERPINB4 recombinant protein with SERPINB4 monoclonal antibody, clone 6s40 (Cat # MAB8849) at 1 : 1000 dilution.

Specification

Product Description Mouse monoclonal antibody raised against full length recombinant SERPINB4.

Amount 100 uL

Immunogen Recombinant protein corresponding to full length human SERPINB4.

Host Mouse

Reactivity Human

Specificity This antibody recognizes recombinant protein SCCA2.

Form Liquid

Purification Affinity purification

Concentration 1 ug/uL

Isotype IgG1

Recommend Usage Western Blot (1:1000)
The optimal working dilution should be determined by the end user.

Storage Buffer	In citrate-Tris-HCl, pH7.0 (0.02% Proclin 300)
-----------------------	--

Storage Instruction	Store at -20°C. Aliquot to avoid repeated freezing and thawing.
----------------------------	--

Applications

- Western Blot (Recombinant protein)

Western blot analysis in SERPINB4 recombinant protein with SERPINB4 monoclonal antibody, clone 6s40 (Cat # MAB8849) at 1 : 1000 dilution.

- Enzyme-linked Immunoabsorbent Assay

Gene Info — SERPINB4

Entrez GeneID	6318
----------------------	----------------------

Protein Accession#	NM_002974.2
---------------------------	-----------------------------

Gene Name	SERPINB4
------------------	----------

Gene Alias	LEUPIN, PI11, SCCA-2, SCCA1, SCCA2
-------------------	------------------------------------

Gene Description	serpin peptidase inhibitor, clade B (ovalbumin), member 4
-------------------------	---

Omim ID	600518
----------------	------------------------

Gene Ontology	Hyperlink
----------------------	---------------------------

Gene Summary	clade B (ovalbumin)
---------------------	---------------------

Other Designations	SCCA2/SCCA1 fusion protein protease inhibitor (leucine-serpin) serine (or cysteine) proteinase inhibitor, clade B (ovalbumin), member 4 squamous cell carcinoma antigen 1 squamous cell carcinoma antigen 2
---------------------------	---