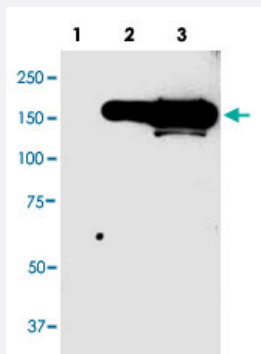


GFP tag monoclonal antibody, clone 946as

Catalog # MAB8758

Size 100 ug

Applications



Western Blot (Transfected lysate)

Western blot analysis of GFP tag monoclonal antibody, clone 946as (Cat # MAB8758) in 10 ug lysate from GFP fusion protein positive 293 cells.

Lane 1 : Negative control.

Lane 2 : 1 ug anti-GFP antibody.

Lane 3 : 10 ug anti-GFP antibody.

Specification

Product Description	Mouse monoclonal antibody raised against synthetic peptide of GFP tag.
Immunogen	A synthetic peptide (conjugated with carrier KLH) corresponding to N-terminus amino acids of Aequorea victoria GFP tag.
Host	Mouse
Reactivity	Jellyfishes
Specificity	This antibody recognizes native and denatured forms of GFP and its variants EGFP, YFP, EYFP, and CFP.
Form	Liquid
Purification	Affinity purification
Concentration	1 ug/uL
Isotype	IgG1
Recommend Usage	Western Blot (1:1000) The optimal working dilution should be determined by the end user.

Storage Buffer	In PBS, pH 7.4 (0.05% sodium azide)
Storage Instruction	Store at -20°C. Aliquot to avoid repeated freezing and thawing.
Note	This product contains sodium azide: a POISONOUS AND HAZARDOUS SUBSTANCE which should be handled by trained staff only.

Applications

- Western Blot (Transfected lysate)

Western blot analysis of GFP tag monoclonal antibody, clone 946as (Cat # MAB8758) in 10 ug lysate from GFP fusion protein positive 293 cells.

Lane 1 : Negative control.

Lane 2 : 1 ug anti-GFP antibody.

Lane 3 : 10 ug anti-GFP antibody.

- Immunohistochemistry

- Immunoprecipitation

- Enzyme-linked Immunoabsorbent Assay

- Dot Blot