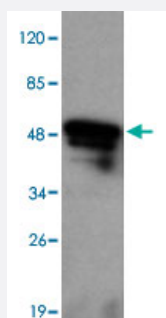


# MAP2 monoclonal antibody

Catalog # MAB8746

Size 100 ug

## Applications



### Western Blot (Recombinant protein)

Western blot analysis of MAP2 monoclonal antibody (Cat # MAB8746) at 1 : 2000 dilution interacts with recombinant MAP2 protein with a DsbA tag. Predicted band size : 50 KDa. Observed band size : 50 KDa.

## Specification

<b>Product Description</b>	Mouse monoclonal antibody raised against partial recombinant MAP2.
<b>Immunogen</b>	Recombinant protein corresponding to C-terminus residues of human MAP2.
<b>Host</b>	Mouse
<b>Reactivity</b>	Human
<b>Specificity</b>	This antibody is specific to MAP2.
<b>Form</b>	Liquid
<b>Purification</b>	Protein G purification
<b>Concentration</b>	1 mg/mL
<b>Recommend Usage</b>	Western Blot (1:100-1:2000) ELISA (1:5000-1:20000) The optimal working dilution should be determined by the end user.
<b>Storage Buffer</b>	In PBS, pH 7.4 (0.02% sodium azide, 50% glycerol)

**Storage Instruction**

Store at 4°C for three months. For long term storage store at -20°C.  
Aliquot to avoid repeated freezing and thawing.

**Note**

This product contains sodium azide: a POISONOUS AND HAZARDOUS SUBSTANCE which should be handled by trained staff only.

## Applications

- Western Blot (Recombinant protein)

Western blot analysis of MAP2 monoclonal antibody (Cat # MAB8746) at 1 : 2000 dilution interacts with recombinant MAP2 protein with a DsbA tag. Predicted band size : 50 KDa. Observed band size : 50 KDa.

- Enzyme-linked Immunoabsorbent Assay

## Gene Info — MAP2

**Entrez GeneID**[4133](#)**GeneBank Accession#**[NM\\_031846.2](#)**Gene Name**

MAP2

**Gene Alias**

DKFZp686I2148, MAP2A, MAP2B, MAP2C

**Gene Description**

microtubule-associated protein 2

**Omim ID**[157130](#)**Gene Ontology**[Hyperlink](#)**Gene Summary**

This gene encodes a protein that belongs to the microtubule-associated protein family. The proteins of this family are thought to be involved in microtubule assembly, which is an essential step in neurogenesis. The products of similar genes in rat and mouse are neuron-specific cytoskeletal proteins that are enriched in dendrites, implicating a role in determining and stabilizing dendritic shape during neuron development. A number of alternatively spliced variants encoding distinct isoforms have been described. [provided by RefSeq]

**Other Designations**

OTTHUMP00000163916

## Disease

- [Cardiovascular Diseases](#)

- [Diabetes Mellitus](#)
- [Edema](#)
- [Tobacco Use Disorder](#)