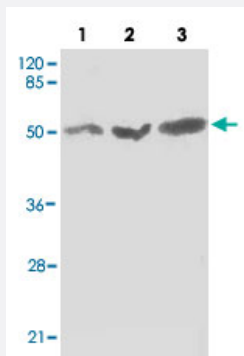


KDM1A monoclonal antibody

Catalog # MAB8709

Size 100 ug

Applications



Western Blot (Cell lysate)

Western blot of KDM1A monoclonal antibody (Cat # MAB8709) at 1 : 1000 dilution. Lane 1 : MCF-7 whole cell lysate 40 ug/Lane. Lane 2 : NIH/3T3 whole cell lysate 40 ug/Lane. Lane 3 : 293T whole cell lysate 40 ug/Lane. Predicted band size : 95 KDa. Observed band size : 50 KDa.

Specification

Product Description	Mouse monoclonal antibody raised against partial recombinant KDM1A.
Immunogen	Recombinant protein corresponding to internal residues of human KDM1A.
Host	Mouse
Reactivity	Human
Specificity	This antibody is specific to KDM1A.
Form	Liquid
Purification	Protein G purification
Concentration	1 mg/mL
Recommend Usage	Western Blot (1:100-1:2000) ELISA (1:5000-1:20000) The optimal working dilution should be determined by the end user.
Storage Buffer	In PBS, pH 7.4 (0.02% sodium azide, 50% glycerol)

Storage Instruction

Store at 4°C for three months. For long term storage store at -20°C.
Aliquot to avoid repeated freezing and thawing.

Note

This product contains sodium azide: a POISONOUS AND HAZARDOUS SUBSTANCE which should be handled by trained staff only.

Applications

- Western Blot (Cell lysate)

Western blot of KDM1A monoclonal antibody (Cat # MAB8709) at 1 : 1000 dilution. Lane 1 : MCF-7 whole cell lysate 40 ug/Lane. Lane 2 : NIH/3T3 whole cell lysate 40 ug/Lane. Lane 3 : 293T whole cell lysate 40 ug/Lane. Predicted band size : 95 KDa. Observed band size : 50 KDa.

- Enzyme-linked Immunoabsorbent Assay

Gene Info — AOF2

Entrez GeneID[23028](#)**GeneBank Accession#**[NM_001009999](#)**Gene Name**

AOF2

Gene Alias

BHC110, KDM1, KIAA0601, LSD1

Gene Description

amine oxidase (flavin containing) domain 2

Omim ID[609132](#)**Gene Ontology**[Hyperlink](#)**Gene Summary**

This gene encodes a nuclear protein containing a SWIRM domain, a FAD-binding motif, and an amine oxidase domain. This protein is a component of several histone deacetylase complexes, though it silences genes by functioning as a histone demethylase. Alternative splicing results in multiple transcript variants. [provided by RefSeq]

Other Designations

BRAF35-HDAC complex protein BHC110|FAD-binding protein BRAF35-HDAC complex, 110 kDa subunit|lysine (K)-specific demethylase 1|lysine-specific histone demethylase 1