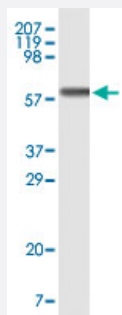


KRT1 monoclonal antibody, clone 3C10F7, 3C10G5

Catalog # MAB8298

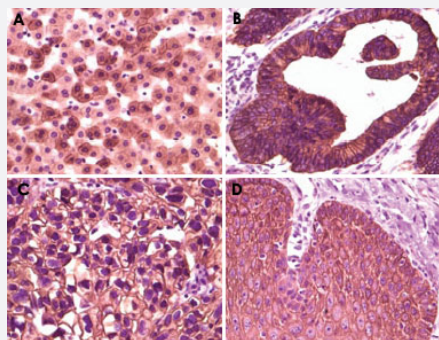
Size 100 uL

Applications



Western Blot (Recombinant protein)

Western blot analysis using KRT1 monoclonal antibody, clone 3C10F7, 3C10G5 (Cat # MAB8298) against truncated KRT1 recombinant protein.



Immunohistochemistry (Formalin/PFA-fixed paraffin-embedded sections)

Immunohistochemical analysis of paraffin-embedded human liver tissue (A), colon carcinoma (B), lung carcinoma (C) and esophagus tissue (D), showing membrane localization using KRT1 monoclonal antibody, clone 3C10F7, 3C10G5 (Cat # MAB8298) with DAB staining.

Specification

Product Description	Mouse monoclonal antibody raised against partial recombinant KRT1.
Immunogen	Recombinant protein corresponding to truncated human KRT1.
Host	Mouse
Reactivity	Human
Form	Liquid
Isotype	IgG1

Recommend Usage	Western Blot (1:500-1:2000)
	Immunohistochemistry (Formalin/PFA-fixed paraffin-embedded sections) (1:500-1:2000)
	Immunohistochemistry (Frozen sections) (1:500-1:2000)
	ELISA (1:10000)
	The optimal working dilution should be determined by the end user.
Storage Buffer	In ascites
Storage Instruction	Store at -20°C. Aliquot to avoid repeated freezing and thawing.

Applications

- Western Blot (Recombinant protein)

Western blot analysis using KRT1 monoclonal antibody, clone 3C10F7, 3C10G5 (Cat # MAB8298) against truncated KRT1 recombinant protein.

- Immunohistochemistry (Formalin/PFA-fixed paraffin-embedded sections)

Immunohistochemical analysis of paraffin-embedded human liver tissue (A), colon carcinoma (B), lung carcinoma (C) and esophagus tissue (D), showing membrane localization using KRT1 monoclonal antibody, clone 3C10F7, 3C10G5 (Cat # MAB8298) with DAB staining.

- Immunohistochemistry (Frozen sections)

- Enzyme-linked Immunoabsorbent Assay

Gene Info — KRT1

Entrez GeneID	3848
Gene Name	KRT1
Gene Alias	CK1, EHK1, K1, KRT1A
Gene Description	keratin 1
Omim ID	113800 139350 146590 148700 600962 607602 607654
Gene Ontology	Hyperlink

Gene Summary

The protein encoded by this gene is a member of the keratin gene family. The type II cytokeratins consist of basic or neutral proteins which are arranged in pairs of heterotypic keratin chains coexpressed during differentiation of simple and stratified epithelial tissues. This type II cytokeratin is specifically expressed in the spinous and granular layers of the epidermis with family member KRT 10 and mutations in these genes have been associated with bullous congenital ichthyosiform erythroderma. The type II cytokeratins are clustered in a region of chromosome 12q12-q13. [provided by RefSeq]

Other Designations

cytokeratin 1|epidermolytic hyperkeratosis 1|hair alpha protein|keratin, type II cytoskeletal 1