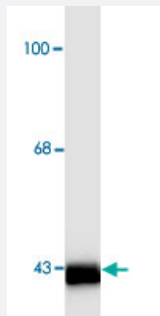


Actin monoclonal antibody, clone C4

Catalog # MAB8172 Size 100 uL

Applications



Western Blot (Tissue lysate)

Western blot of rat hippocampal homogenate showing specific immunolabeling of the ~ 42k actin protein.

Specification

Product Description	Mouse monoclonal antibody raised against native Actin.
Immunogen	Native purified Actin from Chicken gizzard.
Host	Mouse
Theoretical MW (kDa)	42
Reactivity	Chicken, Human, Mouse, Rat
Specificity	Specific for endogenous levels of the ~42 kDa actin protein. Reacts with all actin isoforms.
Form	Liquid
Purification	Unpurified ascites fluid.
Isotype	IgG1
Recommend Usage	Immunofluorescence (1:200-1:500) Immunohistochemistry (1:500) Western Blot (1:5000) The optimal working dilution should be determined by the end user.

Storage Buffer	In ascites fluid (10 mM sodium azide).
Storage Instruction	Store at -20°C. Aliquot to avoid repeated freezing and thawing. Recommended that the antibody be aliquoted into smaller working volumes (10-30 uL/vial depending on usage) upon arrival and stored long term at -20°C or -80°C, while keeping a working aliquot stored at 4°C for short term.
Note	This product contains sodium azide: a POISONOUS AND HAZARDOUS SUBSTANCE which should be handled by trained staff only.

Applications

- Western Blot (Tissue lysate)

Western blot of rat hippocampal homogenate showing specific immunolabeling of the ~ 42k actin protein.

- Immunohistochemistry

- Immunofluorescence

Publication Reference

- [Disrupted autophagy and neuronal dysfunction in C. elegans knockin models of FUS amyotrophic lateral sclerosis.](#)

Saba N Baskoylu, Natalie Chapkis, Burak Unsal, Jeremy Lins, Kelsey Schuch, Jonah Simon, Anne C Hart.

Cell Reports 2022 Jan; 38(4):110195.

Application: WB-Ce, C.elegans, C. elegans

- [Ultrastructural analysis in yeast reveals a meiosis-specific actin-containing nuclear bundle.](#)

Tomoko Takagi, Masako Osumi, Akira Shinohara.

Communications Biology 2021 Aug; 4(1):1009.

Application: IEM, Yeast, Yeast cells

- [Composites of Nucleic Acids and Boron Clusters \(C2B10H12\) as Functional Nanoparticles for Downregulation of EGFR Oncogene in Cancer Cells.](#)

Damian Kaniowski, Katarzyna Ebenryter-Olbińska, Katarzyna Kulik, Justyna Suwara, Wojciech Cypryk, Agata Jakóbik-Kolon, Zbigniew Leśnikowski and Barbara Nawrot.

International Journal of Molecular Sciences 2021 May; 22(9):4863.

Application: WB, Human, A431 cells

- [NuMA interacts with phosphoinositides and links the mitotic spindle with the plasma membrane.](#)

Kotak S, Busso C, Goczy P.

The EMBO Journal 2014 Aug; 33(16):1815.

Application: IF, WB-Tr, Human, HeLa Kyoto cells

- [Rab18 Facilitates Dengue Virus Infection by Targeting Fatty Acid Synthase to Sites of Viral Replication.](#)

Tang WC, Lin RJ, Liao CL, Lin YL.

Journal of Virology 2014 Jun; 88(12):6793.

Application: WB-Tr, Human, A549 cells

- [NuMA phosphorylation by CDK1 couples mitotic progression with cortical dynein function.](#)

Kotak S, Busso C, Gönczy P.

The EMBO Journal 2013 Sep; 32(18):2517.

Application: WB-Ce, WB-Tr, Human, HeLa cells

- [Cortical dynein is critical for proper spindle positioning in human cells.](#)

Kotak S, Busso C, Gönczy P.

Journal of Cell Biology 2012 Oct; 199(1):97.

Application: WB-Tr, Human, HeLa cells

- [Two monoclonal antibodies to actin: one muscle selective and one generally reactive.](#)

Lessard JL.

Cell Motility and the Cytoskeleton 1988 Jan; 10(3):349.

Application: C-ELISA, IF, IHC, WB-Ti, Chicken, Human, Chicken gizzard actin, Chicken muscle, Human fibroblasts, Purified proteins