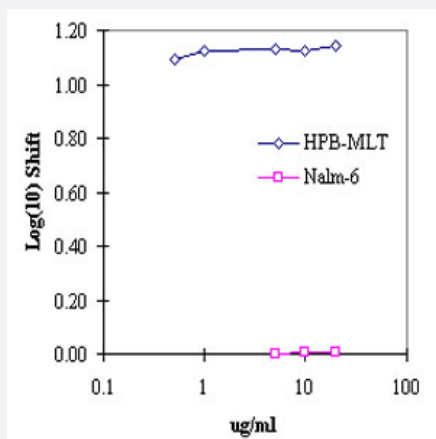


CD2 monoclonal antibody, clone UMCD2/IE7E8

Catalog # MAB6895 Size 100 ug

Applications



Flow Cytometry

5 X 10⁵ cultured HPB-MLT human tumor cells were washed and incubated 45 minutes on ice with 80 uL of CD2 monoclonal antibody, clone UMCD2/IE7E8 (Cat # MAB6895) at 1 ug/mL. Cells were washed twice and incubated with Goat anti-Mouse IgG/FITC, after which they were washed three times, fixed and analyzed by FACS. Cells stained positive with a mean shift of 1.12 log 10 fluorescent units when compared to a Mouse IgG2a negative control.

Specification

Product Description	Mouse monoclonal antibody raised against native CD2.
Immunogen	Native purified CD2 from human rheumatoid synovial T cell line (ST-1) .
Host	Mouse
Reactivity	Human
Form	Liquid
Isotype	IgG2a, kappa
Recommend Usage	The optimal working dilution should be determined by the end user.
Storage Buffer	In 50 mM sodium phosphate buffer, 100 mM potassium Chloride, 150 mM NaCl, pH 7.5 (0.5 mg/mL gentamicin sulfate)
Storage Instruction	Store at 4°C.

Applications

- Flow Cytometry

5 X 10⁵ cultured HPB-MLT human tumor cells were washed and incubated 45 minutes on ice with 80 uL of CD2 monoclonal antibody, clone UMCD2/IE7E8 (Cat # MAB6895) at 1 ug/mL. Cells were washed twice and incubated with Goat anti-Mouse IgG/FITC, after which they were washed three times, fixed and analyzed by FACS. Cells stained positive with a mean shift of 1.12 log 10 fluorescent units when compared to a Mouse IgG2a negative control.

Gene Info — CD2

Entrez GeneID	914
Gene Name	CD2
Gene Alias	SRBC, T11
Gene Description	CD2 molecule
Omim ID	186990
Gene Ontology	Hyperlink
Gene Summary	sheep red blood cell receptor OTTHUMP00000024366 OTTHUMP00000059318 lymphocyte-function antigen-2
Other Designations	CD2 antigen (p50), sheep red blood cell receptor OTTHUMP00000024366 OTTHUMP00000059318 lymphocyte-function antigen-2

Publication Reference

- [CD2 and the regulation of T cell anergy.](#)

Bell GM, Imboden JB.

Journal of Immunology 1995 Sep; 155(6):2805.

Application: Flow Cyt, Human, Mouse, T cells

- [An anti-CD2 monoclonal antibody that both inhibits and stimulates T cell activation recognizes a subregion of CD2 distinct from known ligand-binding sites.](#)

Kozarsky KF, Tsai C, Bott CM, Allada G, Li LL, Fox DA.

Cellular Immunology 1993 Sep; 150(2):235.

Application: Flow Cyt, WB-Ce, Human, PBMCs, Thymocytes

Pathway

- [Cell adhesion molecules \(CAMs\)](#)
- [Hematopoietic cell lineage](#)

Disease

- [Arthritis](#)
- [Genetic Predisposition to Disease](#)