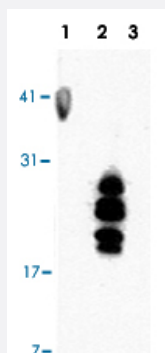


# HBEGF monoclonal antibody, clone 4G10

Catalog # MAB6756

Size 100 ug

## Applications



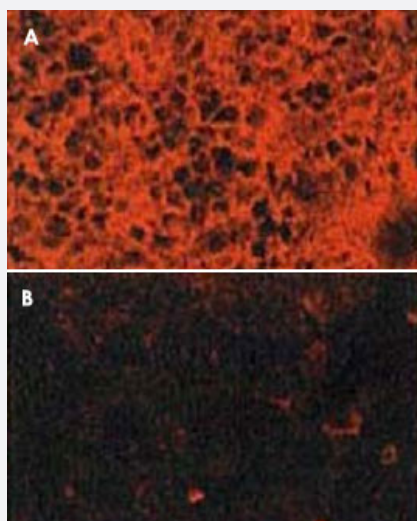
### Western Blot (Transfected lysate)

Western blotting with HBEGF monoclonal antibody, clone 4G10 (Cat # MAB6756).

Lane 1. Vero cell extract.

2. Vero cells carrying human HBEGF expression vector.

3. Vero cells carrying mouse HB-EGF expression vector.



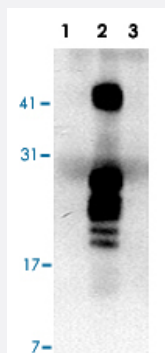
### Immunocytochemistry

Immunocytochemical staining with HBEGF monoclonal antibody, clone 4G10 (Cat # MAB6756).

A. VERO cells carrying human HGEGF expression vector.

B. Vero cells carrying mouse HB-EGF expression vector.

Cells treated with antibody 4G10, fixed with 4% PFA and reacted with Cys3 conjugated 2nd antibody.



### Immunoprecipitation

Immunoprecipitation with HBEGF monoclonal antibody, clone 4G10 (Cat # MAB6756).

Lane 1. Vero cell extract.

2. Vero cells carrying human HBEGF expression vector.

3. Vero cells carrying mouse HB-EGF expression vector.

Except that the cell surface was biotinylated.

After immunoprecipitation with the antibody, HRP-conjugated streptoavidin was used to detect the HBEGF by Western blotting.

## Specification

<b>Product Description</b>	Mouse monoclonal antibody raised against recombinant HBEGF.
<b>Immunogen</b>	Recombinant protein corresponding to human HBEGF.
<b>Host</b>	Mouse
<b>Reactivity</b>	Human
<b>Form</b>	Liquid
<b>Isotype</b>	IgG1
<b>Recommend Usage</b>	Western Blot (0.2-1 ug/mL) Immunofluorescence (5~10 ug/mL) Immunoprecipitation (2 ug/mL) The optimal working dilution should be determined by the end user.
<b>Storage Buffer</b>	In PBS (50% glycerol, azide free)
<b>Storage Instruction</b>	Store at -20°C. For long term storage store at -80°C. Aliquot to avoid repeated freezing and thawing.

## Applications

- Western Blot (Transfected lysate)

Western blotting with HBEGF monoclonal antibody, clone 4G10 (Cat # MAB6756).

Lane 1. Vero cell extract.

2. Vero cells carrying human HBEGF expression vector.
3. Vero cells carrying mouse HB-EGF expression vector.

- Immunocytochemistry

Immunocytochemical staining with HBEGF monoclonal antibody, clone 4G10 (Cat # MAB6756).

A. VERO cells carrying human HEGGF expression vector.

B. Vero cells carrying mouse HB-EGF expression vector.

Cells treated with antibody 4G10, fixed with 4% PFA and reacted with Cys3 conjugated 2nd antibody.

- Immunoprecipitation

Immunoprecipitation with HBEGF monoclonal antibody, clone 4G10 (Cat # MAB6756).

Lane 1. Vero cell extract.

2. Vero cells carrying human HBEGF expression vector.
3. Vero cells carrying mouse HB-EGF expression vector.

Except that the cell surface was biotinylated.

After immunoprecipitation with the antibody, HRP-conjugated streptavidin was used to detect the HBEGF by Western blotting.

## Gene Info — HBEGF

Entrez GeneID	<a href="#">1839</a>
Gene Name	HBEGF
Gene Alias	DTR, DTS, DTSF, HEGFL
Gene Description	heparin-binding EGF-like growth factor
Omim ID	<a href="#">126150</a>
Gene Ontology	<a href="#">Hyperlink</a>
Other Designations	diphtheria toxin receptor (heparin-binding EGF-like growth factor) diphtheria toxin receptor (heparin-binding epidermal growth factor-like growth factor) heparin-binding epidermal growth factor

## Publication Reference

- [Heparin-binding EGF-like growth factor is a promising target for ovarian cancer therapy.](#)

Miyamoto S, Hirata M, Yamazaki A, Kageyama T, Hasuwa H, Mizushima H, Tanaka Y, Yagi H, Sonoda K, Kai M, Kanoh H, Nakano H, Mekada E.

Cancer Research 2004 Aug; 64(16):5720.

- [Heparin-binding EGF-like growth factor, which acts as the diphtheria toxin receptor, forms a complex with membrane protein DRAP27/CD9, which up-regulates functional receptors and diphtheria toxin sensitivity.](#)

Iwamoto R, Higashiyama S, Mitamura T, Taniguchi N, Klagsbrun M, Mekada E.

The EMBO Journal 1994 May; 13(10):2322.

## Pathway

- [Epithelial cell signaling in Helicobacter pylori infection](#)
- [ErbB signaling pathway](#)
- [GnRH signaling pathway](#)

## Disease

- [Cardiovascular Diseases](#)

- [Diabetes Mellitus](#)
- [Edema](#)
- [Genetic Predisposition to Disease](#)
- [Hyperparathyroidism](#)