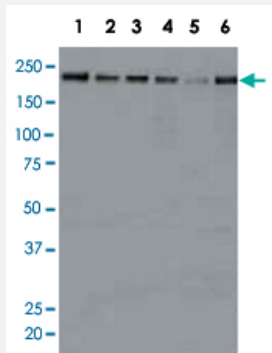


KDM5A monoclonal antibody, clone 9A6

Catalog # MAB6751

Size 100 ug

Applications



Western Blot (Cell lysate)

Identification of KDM5A in crude cell extracts by western blotting with KDM5A monoclonal antibody, clone 9A6 (Cat # MAB6751).

1. HeLa control siRNA
2. HeLa KDM5A siRNA
3. MCF-7
4. U-2 OS
5. NIH/3T3
6. J1 (mouse ES)

Specification

Product Description	Mouse monoclonal antibody raised against synthetic peptide of KDM5A.
Immunogen	A synthetic peptide corresponding to amino acids 1416-1434 of human KDM5A.
Host	Mouse
Reactivity	Human
Specificity	This antibody is specific to human and mouse KDM5A. It can detect endogenous levels of KDM5A.
Form	Liquid
Isotype	IgG2a, kappa
Recommend Usage	Western Blot (1 ug/mL) The optimal working dilution should be determined by the end user.
Storage Buffer	In PBS (50% glycerol)

Storage Instruction

Store at -20°C. For long term storage store at -80°C.
Aliquot to avoid repeated freezing and thawing.

Applications

- Western Blot (Cell lysate)

Identification of KDM5A in crude cell extracts by western blotting with KDM5A monoclonal antibody, clone 9A6 (Cat # MAB6751).

1. HeLa control siRNA
2. HeLa KDM5A siRNA
3. MCF-7
4. U-2 OS
5. NIH/3T3
6. J1 (mouse ES)

Gene Info — JARID1A

Entrez GeneID [5927](#)

Gene Name JARID1A

Gene Alias KDM5A, RBBP2, RBP2

Gene Description jumonji, AT rich interactive domain 1A

Omim ID [180202](#)

Gene Ontology [Hyperlink](#)

Gene Summary The protein encoded by this gene is a ubiquitously expressed nuclear protein. It binds directly, with several other proteins, to retinoblastoma protein which regulates cell proliferation. This protein also interacts with rhombotin-2 which functions distinctly in erythropoiesis and in T-cell leukemogenesis. Rhombotin-2 is thought to either directly affect the activity of the encoded protein or may indirectly modulate the functions of the retinoblastoma protein by binding to this protein. Alternatively spliced transcript variants encoding distinct isoforms have been found for this gene. [provided by RefSeq]

Other Designations Jumonji, AT rich interactive domain 1A (RBBP2-like)|Jumonji, AT rich interactive domain 1A (RBP2-like)|retinoblastoma binding protein 2|retinoblastoma-binding protein 2

Publication Reference

- [Genome-wide analysis of the H3K4 histone demethylase RBP2 reveals a transcriptional program controlling differentiation.](#)

Lopez-Bigas N, Kisiel TA, Dewaal DC, Holmes KB, Volkert TL, Gupta S, Love J, Murray HL, Young RA, Benevolenskaya EV.
Molecular Cell 2008 Aug; 31(4):520.

Application: ChIP, Human, U-937 cells

- [RBP2 belongs to a family of demethylases, specific for tri-and dimethylated lysine 4 on histone 3.](#)

Christensen J, Agger K, Cloos PA, Pasini D, Rose S, Sennels L, Rappsilber J, Hansen KH, Salcini AE, Helin K.
Cell 2007 Mar; 128(6):1063.

Application: IP, WB-Re, Recombinant protein

- [The retinoblastoma binding protein RBP2 is an H3K4 demethylase.](#)

Klose RJ, Yan Q, Tothova Z, Yamane K, Erdjument-Bromage H, Tempst P, Gilliland DG, Zhang Y, Kaelin WG Jr.
Cell 2007 Mar; 128(5):889.

Application: WB-Ce, Mouse, MEFs