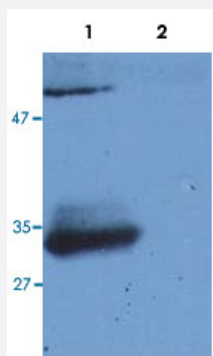


IgG monoclonal antibody, clone 4A11

Catalog # MAB6440 Size 100 ug

Applications



Western Blot (Recombinant protein)

Western Blotting analysis (reducing conditions) of human IgG Fab fragment using IgG monoclonal antibody, clone 4A11 (Cat # MAB6440).

Lane 1 : Normal human immunoglobulins.

Lane 2 : Normal bovine immunoglobulins.

Specification

Product Description	Mouse monoclonal antibody raised against IgG.
Immunogen	Human IgG.
Host	Mouse
Reactivity	Human
Specificity	This antibody reacts with Fab fragment of human IgG.
Form	Liquid
Purification	Protein-A affinity chromatography.
Isotype	IgG2b
Recommend Usage	The optimal working dilution should be determined by the end user.
Storage Buffer	In PBS, pH 7.4 (0.09% sodium azide)
Storage Instruction	Store at 4°C. Do not freeze. Aliquot to avoid repeated freezing and thawing.

Note

This product contains sodium azide: a POISONOUS AND HAZARDOUS SUBSTANCE which should be handled by trained staff only.

Applications

- Western Blot (Recombinant protein)

Western Blotting analysis (reducing conditions) of human IgG Fab fragment using IgG monoclonal antibody, clone 4A11 (Cat # MAB6440).

Lane 1 : Normal human immunoglobulins.

Lane 2 : Normal bovine immunoglobulins.

- Enzyme-linked Immunoabsorbent Assay

- Flow Cytometry

Publication Reference

- [T cell-dependent differentiation of human B cells into IgM, IgG, IgA, or IgE plasma cells: high rate of antibody production by IgE plasma cells, but limited clonal expansion of IgE precursors.](#)

Brinkmann V, Heusser CH.

Cellular Immunology 1993 Dec; 152(2):323.

- [Serological abnormalities in juvenile chronic arthritis: a review of 46 cases.](#)

Balogh Z, Meretey K, Falus A, Bozsok S.

Annals of the Rheumatic Diseases 1980 Apr; 39(2):129.

- [Serum immunoglobulins after surgical operation.](#)

Fuller JM, Keyser JW.

Clinical Chemistry 1975 May; 21(6):667.