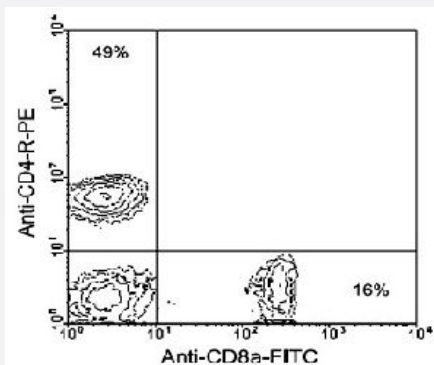


# Cd8a monoclonal antibody, clone 53-6.7 (PE/Cy7)

Catalog # MAB6112      Size 100 ug

## Applications



### Flow Cytometry

Cells from BALB/c mesenteric lymph nodes were double-stained with Cd8a monoclonal antibody, clone 53-6.7 (FITC) (Cat # MAB6105) and Cd4 monoclonal antibody, clone GK1.5-PE, gated on small lymphocytes and analyzed on a FACScan™ flow cytometer (BDIS, San Jose, CA).

## Specification

<b>Product Description</b>	Rat monoclonal antibody raised against native Cd8a.
<b>Immunogen</b>	Native purified from mouse thymus/spleen cells.
<b>Host</b>	Rat
<b>Reactivity</b>	Mouse
<b>Specificity</b>	Specificity alpha chain of the murine CD8 heterodimer, Mr 32-34 KDa
<b>Form</b>	Liquid
<b>Conjugation</b>	PE/Cy7
<b>Isotype</b>	IgG2a, kappa
<b>Recommend Usage</b>	Flow Cytometry (0.2 ug/10 <sup>6</sup> cells) The optimal working dilution should be determined by the end user.
<b>Storage Buffer</b>	In PBS (0.09% sodium azide)

**Storage Instruction**

Store in the dark at 4°C. Do not freeze.  
Avoid prolonged exposure to light.  
Aliquot to avoid repeated freezing and thawing.

**Note**

This product contains sodium azide: a POISONOUS AND HAZARDOUS SUBSTANCE which should be handled by trained staff only.

## Applications

- Immunohistochemistry (Frozen sections)
- Flow Cytometry

Cells from BALB/c mesenteric lymph nodes were double-stained with Cd8a monoclonal antibody, clone 53-6.7 (FITC) (Cat # MAB6105) and Cd4 monoclonal antibody, clone GK1.5-PE, gated on small lymphocytes and analyzed on a FACScan™ flow cytometer (BDIS, San Jose, CA).

## Gene Info — Cd8a

**Entrez GeneID** [12525](#)

**Gene Name** Cd8a

**Gene Alias** BB154331, Ly-2, Ly-35, Ly-B, Lyt-2

**Gene Description** CD8 antigen, alpha chain

**Gene Ontology** [Hyperlink](#)

**Gene Summary** O

**Other Designations** Lyt-2.1 lymphocyte differentiation antigen (AA at 100)

## Publication Reference

- [Extrathymic differentiation of intraepithelial lymphocytes: generation of a separate and unequal T-cell repertoire?](#)

Lefrancois L.

Immunology Today 1991 Dec; 12(12):436.

- [Phenotypic complexity of intraepithelial lymphocytes of the small intestine.](#)

Lefrancois L.

Journal of Immunology 1991 Sep; 147(6):1746.

- [The Lyt-2, Lyt-3 macromolecules: structural and functional studies.](#)

Ledbetter JA, Seaman WE.

Immunological Reviews 1982 Jan; 68:197.