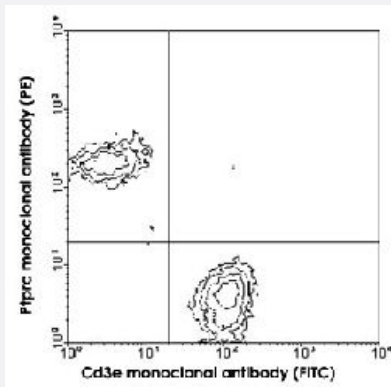


Cd3e monoclonal antibody, clone C363.29B (Biotin)

Catalog # MAB6101 Size 500 ug

Applications



Flow Cytometry

Cells from BALB/c mesenteric lymph nodes were double-stained with Cd3e monoclonal antibody, clone C363.29B (FITC) (Cat # MAB6100) and Ptprc monoclonal antibody, clone RA3-6B2 (PE) (Cat # MAB5722), gated on small lymphocytes and analyzed using a FACScan™ flow cytometer (BDIS, San Jose, CA).

Specification

Product Description	Rat monoclonal antibody raised against Cd3e.
Immunogen	H-2Kb specific mouse cytotoxic T lymphocyte clone BM10-37.
Host	Rat
Reactivity	Mouse
Specificity	Specificity Mouse CD3ε (Mr 25 kD)
Form	Liquid
Conjugation	Biotin
Isotype	IgG2b, kappa
Recommend Usage	Flow Cytometry (3 ug/10 ⁶ cells) The optimal working dilution should be determined by the end user.
Storage Buffer	In PBS (0.09% sodium azide)

Storage Instruction

Store in the dark at 4°C. Do not freeze.
Avoid prolonged exposure to light.
Aliquot to avoid repeated freezing and thawing.

Note

This product contains sodium azide: a POISONOUS AND HAZARDOUS SUBSTANCE which should be handled by trained staff only.

Applications

- Immunoprecipitation
- Flow Cytometry

Cells from BALB/c mesenteric lymph nodes were double-stained with Cd3e monoclonal antibody, clone C363.29B (FITC) (Cat # MAB6100) and Ptprc monoclonal antibody, clone RA3-6B2 (PE) (Cat # MAB5722), gated on small lymphocytes and analyzed using a FACScan™ flow cytometer (BDIS, San Jose, CA).

Gene Info — Cd3e

Entrez GeneID [12501](#)

Gene Name Cd3e

Gene Alias AI504783, CD3, CD3epsilon, T3e

Gene Description CD3 antigen, epsilon polypeptide

Gene Ontology [Hyperlink](#)

Gene Summary O

Other Designations OTTMUSP00000018104

Publication Reference

- [Differential effect of interleukin 1 on naive and memory CD4+ T cells.](#)

Luqman M, Greenbaum L, Lu D, Bottomly K.

European Journal of Immunology 1992 Jan; 22(1):95.

- [Circulating CD3+/T cell receptor V gamma 3+ fetal murine thymocytes home to the skin and give rise to proliferating dendritic epidermal T cells.](#)

Payer E, Elbe A, Stingl G.

Journal of Immunology 1991 Apr; 146(8):2536.

- [Differences in the expression profiles of CD45RB, Pgp-1, and 3G11 membrane antigens and in the patterns of lymphokine secretion by splenic CD4+ T cells from young and aged mice.](#)

Ernst DN, Hobbs MV, Torbett BE, Glasebrook AL, Rehse MA, Bottomly K, Hayakawa K, Hardy RR, Weigle WO.

Journal of Immunology 1990 Sep; 145(5):1295.