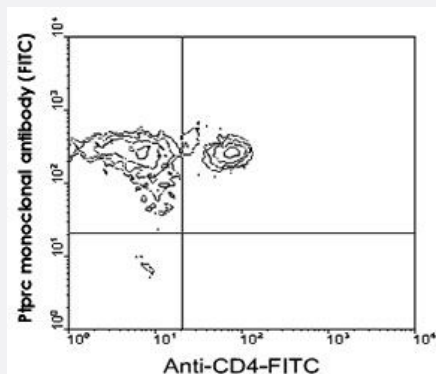


Ptprc monoclonal antibody, clone I3/2.3 (FITC)

Catalog # MAB5936 Size 100 ug

Applications



Flow Cytometry

BALB/c spleen cells were double-stained with Ptprc monoclonal antibody, clone I3/2.3 (FITC) (Cat # MAB5936) and rat anti-mouse CD4-FITC. Small lymphocytes were gated and analyzed on a FACScan™ flow cytometer (BDIS, San Jose, CA).

Specification

| | |
|---------------------|---|
| Product Description | Rat monoclonal antibody raised against native Ptprc. |
| Immunogen | Native purified Ptprc from T1M1 (Thy-1-C) cells. |
| Host | Rat |
| Reactivity | Mouse |
| Specificity | Specificity Mouse CD45 (T200 or leukocyte common antigen/LCA, all isoforms) |
| Form | Liquid |
| Conjugation | FITC |
| Isotype | IgG2b |
| Recommend Usage | Flow Cytometry (1 ug/10 ⁶ cells) The optimal working dilution should be determined by the end user. |
| Storage Buffer | In PBS (0.09% sodium azide) |

Storage Instruction

Store in the dark at 4°C. Do not freeze.
Avoid prolonged exposure to light.
Aliquot to avoid repeated freezing and thawing.

Note

This product contains sodium azide: a POISONOUS AND HAZARDOUS SUBSTANCE which should be handled by trained staff only.

Applications

- Immunohistochemistry (Frozen sections)
- Immunoprecipitation
- Flow Cytometry

BALB/c spleen cells were double-stained with Ptpcr monoclonal antibody, clone I3/2.3 (FITC) (Cat # MAB5936) and rat anti-mouse CD4-FITC. Small lymphocytes were gated and analyzed on a FACScan™ flow cytometer (BDIS, San Jose, CA).

Gene Info — Ptpcr

Entrez GeneID [19264](#)

Gene Name Ptpcr

Gene Alias B220, CD45R, Cd45, Ly-5, Lyl-4, T200, loc

Gene Description protein tyrosine phosphatase, receptor type, C

Gene Ontology [Hyperlink](#)

Gene Summary receptor type

Other Designations lymphocyte common antigen

Publication Reference

- [CD45: an emerging role as a protein tyrosine phosphatase required for lymphocyte activation and development.](#)

Trowbridge IS, Thomas ML.

Annual Review of Immunology 1994 Jan; 12:85.

- [Identification of the alternatively spliced exons of murine CD45 \(T200\) required for reactivity with B220 and other T200-restricted antibodies.](#)

Johnson P, Greenbaum L, Bottomly K, Trowbridge IS.

The Journal of Experimental Medicine 1989 Mar; 169(3):1179.

Application: Flow Cyt, Mouse, Ψ2 cells

- [Interspecies spleen-myeloma hybrid producing monoclonal antibodies against mouse lymphocyte surface glycoprotein, T200.](#)

Trowbridge IS.

The Journal of Experimental Medicine 1978 Jul; 148(1):313.

Application: IP, Mouse, Thymocytes, spleen cells and T1M1 cells