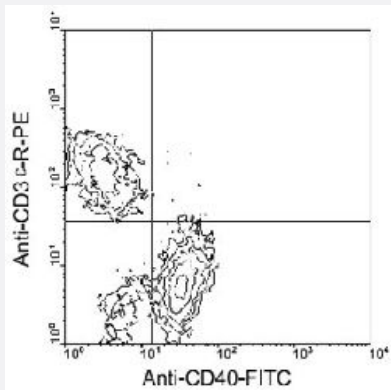


# Cd40 monoclonal antibody, clone 1C10 (FITC)

Catalog # MAB5931      Size 500 ug

## Applications



### Flow Cytometry

Cells from BALB/c spleen were stained with Cd40 monoclonal antibody, clone 1C10 (FITC) (Cat # MAB5931) and Cd3e monoclonal antibody, clone 145-2C11 (PE) (Cat # MAB5909), gated on small lymphocytes and analyzed on a FACScan™ flow cytometer (BDIS, San Jose, CA).

## Specification

**Product Description** Rat monoclonal antibody raised against partial Cd40.

**Immunogen** Extracellular domain of mouse Cd40.

**Host** Rat

**Reactivity** Mouse

**Specificity** Specificity Mouse CD40, Mr 45-50 KDa

**Form** Liquid

**Conjugation** FITC

**Isotype** IgG2a, kappa

**Recommend Usage** Flow Cytometry (2 ug/10<sup>6</sup> cells)  
The optimal working dilution should be determined by the end user.

**Storage Buffer** In PBS (0.09% sodium azide)

**Storage Instruction**

Store in the dark at 4°C. Do not freeze.  
Avoid prolonged exposure to light.  
Aliquot to avoid repeated freezing and thawing.

**Note**

This product contains sodium azide: a POISONOUS AND HAZARDOUS SUBSTANCE which should be handled by trained staff only.

## Applications

- Immunoprecipitation
- Flow Cytometry

Cells from BALB/c spleen were stained with Cd40 monoclonal antibody, clone 1C10 (FITC) (Cat # MAB5931) and Cd3e monoclonal antibody, clone 145-2C11 (PE) (Cat # MAB5909), gated on small lymphocytes and analyzed on a FACScan™ flow cytometer (BDIS, San Jose, CA).

## Gene Info — Cd40

|                           |   |
|---------------------------|---|
| <b>Entrez GeneID</b>      | <a href="#">21939</a>   |
| <b>Gene Name</b>          | Cd40  |
| <b>Gene Alias</b>         | AI326936, Bp50, GP39, HIGM1, IGM, IMD3, T-BAM, TRAP, Tnfrsf5, p50   |
| <b>Gene Description</b>   | CD40 antigen  |
| <b>Gene Ontology</b>      | <a href="#">Hyperlink</a>   |
| <b>Gene Summary</b>       | member 5  |
| <b>Other Designations</b> | OTTMUSP00000017667 OTTMUSP00000017739 T-cell differentiation antigen tumor necrosis factor receptor superfamily, member 5 |

## Publication Reference

- [Monoclonal antibodies to murine CD40 define two distinct functional epitopes.](#)

Heath AW, Wu WW, Howard MC.

European Journal of Immunology 1994 Aug; 24(8):1828.

Application: Flow Cyt, Mouse, Mouse B cells, L cells

- [Properties of mouse CD40: cellular distribution of CD40 and B cell activation by monoclonal anti-mouse CD40 antibodies.](#)

Hasbold J, Johnson-Leger C, Atkins CJ, Clark EA, Klaus GG.

European Journal of Immunology 1994 Aug; 24(8):1835.

Application: Flow Cyt, Mouse, BHK cells

- [Antibodies to murine CD40 protect normal and malignant B cells from induced growth arrest.](#)

Santos-Argumedo L, Gordon J, Heath AW, Howard M.

Cell 1994 Jul; 156(2):272.

Application: Flow Cyt, Mouse , Mouse B cells