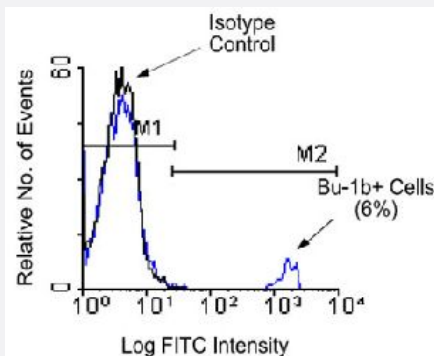


Bu-1b monoclonal antibody, clone 5-11G2 (PE)

Catalog # MAB5846 Size 100 ug

Applications



Flow Cytometry

Chicken peripheral blood mononuclear cells were first incubated with Bu-1b monoclonal antibody, clone 5-11G2 and then counter-stained with goat anti-mouse IgG-FITC. Small lymphocytes were gated using light scatter criteria and analyzed on a FACScan™ flow cytometer (BDB, San Jose, CA).

Specification

Product Description	Mouse monoclonal antibody raised against native Bu-1b.
Immunogen	Native purified from Bursal cells of 2- to 5-week-old CHA (Bu-1b) strain chickens.
Host	Mouse
Reactivity	Chicken
Specificity	Chicken Bu-1b alloantigen, Mr 70 KDa.
Form	Liquid
Conjugation	PE
Isotype	IgG1, kappa
Recommend Usage	Flow Cytometry (0.2 ug/10 ⁶ cells) The optimal working dilution should be determined by the end user.
Storage Buffer	In PBS (0.09% sodium azide)

Storage Instruction

Store in the dark at 4°C. Do not freeze.
Avoid prolonged exposure to light.
Aliquot to avoid repeated freezing and thawing.

Note

This product contains sodium azide: a POISONOUS AND HAZARDOUS SUBSTANCE which should be handled by trained staff only.

Applications

- Immunohistochemistry (Frozen sections)
- Immunoprecipitation
- Flow Cytometry

Chicken peripheral blood mononuclear cells were first incubated with Bu-1b monoclonal antibody, clone 5-11G2 and then counter-stained with goat anti-mouse IgG-FITC. Small lymphocytes were gated using light scatter criteria and analyzed on a FACScan™ flow cytometer (BDB, San Jose, CA).

Publication Reference

- [Monoclonal antibodies against chicken Bu-1a and Bu-1b alloantigens.](#)

Veromaa T, Vainio O, Eerola E, Toivanen P.

Hybridoma 1988 Feb; 7(1):41.