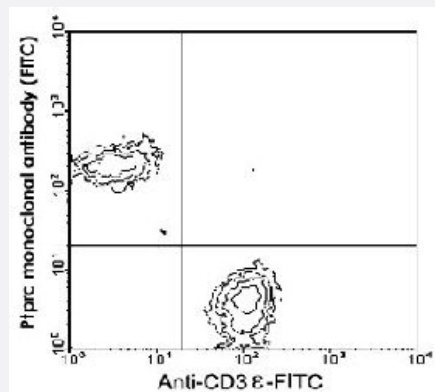


Ptpcr monoclonal antibody, clone RA3-6B2 (APC/Cy5.5)

Catalog # MAB5729

Size 100 ug

Applications



Flow Cytometry

Cells from BALB/c mesenteric lymph nodes were double-stained with Ptpcr monoclonal antibody, clone RA3-6B2 (FITC) (Cat # MAB5720) and Cd3e monoclonal antibody, clone C363.29B (FITC) (Cat # MAB6100). Small lymphocytes were then gated and analyzed on a FACScan™ flow cytometer (BDIS, San Jose, CA).

Specification

Product Description	Rat monoclonal antibody raised against Ptpcr.
Immunogen	Abelson murine leukemia virus-induced pre-B tumor cells.
Host	Rat
Reactivity	Mouse
Specificity	B220 isoform of CD45, Mr 240 KDa.
Form	Liquid
Conjugation	APC/Cy5.5
Isotype	IgG2a, kappa
Recommend Usage	Flow Cytometry (0.2 ug/10 ⁶ cells) The optimal working dilution should be determined by the end user.
Storage Buffer	In PBS (0.09% sodium azide)

Storage Instruction

Store in the dark at 4°C. Do not freeze.
Avoid prolonged exposure to light.
Aliquot to avoid repeated freezing and thawing.

Note

This product contains sodium azide: a POISONOUS AND HAZARDOUS SUBSTANCE which should be handled by trained staff only.

Applications

- Immunoprecipitation
- Flow Cytometry

Cells from BALB/c mesenteric lymph nodes were double-stained with Ptpcr monoclonal antibody, clone RA3-6B2 (FITC) (Cat # MAB5720) and Cd3e monoclonal antibody, clone C363.29B (FITC) (Cat # MAB6100). Small lymphocytes were then gated and analyzed on a FACScan™ flow cytometer (BDIS, San Jose, CA).

Gene Info — Ptpcr

Entrez GeneID[19264](#)**Gene Name**

Ptpcr

Gene Alias

B220, CD45R, Cd45, Ly-5, Lyt-4, T200, loc

Gene Description

protein tyrosine phosphatase, receptor type, C

Gene Ontology[Hyperlink](#)**Gene Summary**

receptor type

Other Designations

lymphocyte common antigen

Publication Reference

- [Activation signal induces the expression of B cell-specific CD45R epitope \(6B2\) on murine T cells.](#)

Watanabe Y, Akaike T.

Scandinavian Journal of Immunology 1994 May; 39(5):419.

- [Resolution and characterization of pro-B and pre-pro-B cell stages in normal mouse bone marrow.](#)

Hardy RR, Carmack CE, Shinton SA, Kemp JD, Hayakawa K.

The Journal of Experimental Medicine 1991 May; 173(5):1213.

- [Lymphokine-activated killer \(LAK\) cells. IV. Characterization of murine LAK effector subpopulations.](#)

Ballas ZK, Rasmussen W.

Journal of Immunology 1990 Jan; 144(1):386.

Application: Flow Cyt, Mouse, Mouse splenocytes