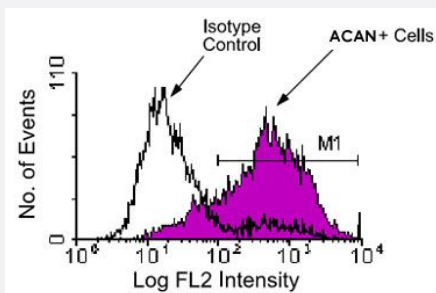


Il2ra monoclonal antibody, clone 7D4 (FITC)

Catalog # MAB5703 Size 100 ug

Applications



Flow Cytometry

Cells from BALB/c spleen were activated by PMA (10 ng/mL) and ionomycin (400 ng/mL) for 48 hours, then stained with Il2ra monoclonal antibody, clone 7D4 (FITC) (Cat # MAB5703) and analyzed on a FACScan™ flow cytometer (BDIS, San Jose, CA).

Specification

Product Description	Rat monoclonal antibody raised against Il2ra.
Immunogen	IL-2-dependent BALB/c mouse helper T-cell clone HT-2.
Host	Rat
Reactivity	Mouse
Specificity	Low affinity alpha chain IL-2 receptor (IL-2Ralpha), Mr 55 KDa.
Form	Liquid
Conjugation	FITC
Isotype	IgM, kappa
Recommend Usage	Flow Cytometry (1 ug/10 ⁶ cells) The optimal working dilution should be determined by the end user.
Storage Buffer	In PBS (0.09% sodium azide)

Storage Instruction

Store in the dark at 4°C. Do not freeze.
Avoid prolonged exposure to light.
Aliquot to avoid repeated freezing and thawing.

Note

This product contains sodium azide: a POISONOUS AND HAZARDOUS SUBSTANCE which should be handled by trained staff only.

Applications

- Immunoprecipitation
- Flow Cytometry

Cells from BALB/c spleen were activated by PMA (10 ng/mL) and ionomycin (400 ng/mL) for 48 hours, then stained with IL2ra monoclonal antibody, clone 7D4 (FITC) (Cat # MAB5703) and analyzed on a FACScan™ flow cytometer (BDIS, San Jose, CA).

Gene Info — IL2ra

Entrez GeneID[16184](#)**Gene Name**

IL2ra

Gene Alias

CD25, IL2r, Ly-43, MGC130561

Gene Description

interleukin 2 receptor, alpha chain

Gene Ontology[Hyperlink](#)**Gene Summary**

O

Other Designations

IL-2R alpha chain|OTTMUSP00000012002|p55 chain

Publication Reference

- [Molecular cloning and expression of cDNAs for the human interleukin-2 receptor.](#)

Leonard WJ, Depper JM, Crabtree GR, Rudikoff S, Pumphrey J, Robb RJ, Kronke M, Svetlik PB, Peffer NJ, Waldmann TA, et al..

Nature 1984 Oct; 311(5987):626.

- [The murine IL 2 receptor. I. Monoclonal antibodies that define distinct functional epitopes on activated T cells and react with activated B cells.](#)

Ortega G, Robb RJ, Shevach EM, Malek TR.

Journal of Immunology 1984 Oct; 133(4):1970.

Application: Flow Cyt, Func, Mouse, HT2 cells

- [Identification and initial characterization of a rat monoclonal antibody reactive with the murine interleukin 2 receptor-ligand complex.](#)

Malek TR, Robb RJ, Shevach EM.

PNAS 1983 Sep; 80(18):5694.

Application: Flow Cyt, Mouse, Mouse lymphocytes