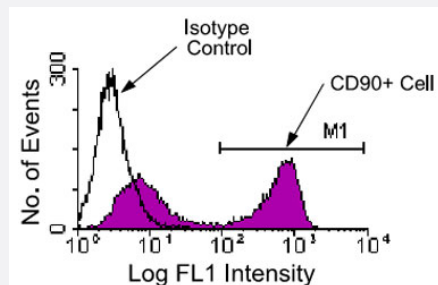


Thy1 monoclonal antibody, clone G7

Catalog # MAB5611 Size 500 ug

Applications



Flow Cytometry

BALB/c mesenteric lymph node cells were stained with either rat IgG2c-FITC (as a negative control) or Thy1 monoclonal antibody, clone G7 (Cat # MAB5611)-FITC. Lymphocytes were then gated and analyzed on a FACScan™ flow cytometer (BDIS, San Jose, CA).

Specification

Product Description	Rat monoclonal antibody raised against Thy1.
Immunogen	MST cell hybridoma C6/G8.
Host	Rat
Reactivity	Mouse
Specificity	Thy-1.1 and Thy-1.2 alloantigens (Thy-1 epitope region A).
Form	Liquid
Isotype	IgG2c
Recommend Usage	The optimal working dilution should be determined by the end user.
Storage Buffer	In 100 mM BBS, pH 8.2
Storage Instruction	Store at 4°C.

Applications

- Immunocytochemistry

- Flow Cytometry

BALB/c mesenteric lymph node cells were stained with either rat IgG2c-FITC (as a negative control) or Thy1 monoclonal antibody, clone G7 (Cat # MAB5611)-FITC. Lymphocytes were then gated and analyzed on a FACScan™ flow cytometer (BDIS, San Jose, CA).

Gene Info — Thy1

Entrez GeneID [21838](#)

Gene Name Thy1

Gene Alias CD90, T25, Thy-1, Thy-1.2, Thy1.1, Thy1.2

Gene Description thymus cell antigen 1, theta

Gene Ontology [Hyperlink](#)

Gene Summary O

Other Designations OTTMUSP00000018127|Thy 1.2

Publication Reference

- [Thy-1 triggers mouse thymocyte apoptosis through a bcl-2-resistant mechanism.](#)

Hueber AO, Raposo G, Pierres M, He HT.

The Journal of Experimental Medicine 1994 Mar; 179(3):785.

Application: Func, Mouse, Mouse thymocytes

- [Activation-driven T cell death. II. Quantitative differences alone distinguish stimuli triggering nontransformed T cell proliferation or death.](#)

Ucker DS, Meyers J, Obermiller PS.

Journal of Immunology 1992 Sep; 149(5):1583.

Application: Func, Mouse, CTL L3.AI, Nancy cells

- [Thy-1 supports adhesion of mouse thymocytes to thymic epithelial cells through a Ca²⁺\(+\)-independent mechanism.](#)

He HT, Naquet P, Caillol D, Pierres M.

The Journal of Experimental Medicine 1991 Feb; 173(2):515.

Application: Func, IP, Mouse, Mouse neonatal thymocytes, MTE cells