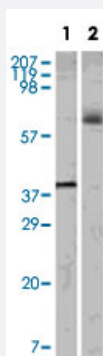


ELK1 monoclonal antibody, clone 7E10D5, 7E10E8

Catalog # MAB5580

Size 100 ug

Applications



Western Blot

Western blot analysis using ELK1 monoclonal antibody, clone 7E10D5, 7E10E8 (Cat # MAB5580) against truncated recombinant ELK1 (Lane 1) and K-562 cell lysate (Lane 2).

Specification

Product Description Mouse monoclonal antibody raised against partial recombinant ELK1.

Immunogen Recombinant protein corresponding to ELK1.

Host Mouse

Reactivity Human

Form Liquid

Isotype IgG1

Recommend Usage ELISA (1:10000)
Western Blot (1:500-1:1000)
The optimal working dilution should be determined by the end user.

Storage Buffer In PBS, pH 7.2 (50% glycerol, 0.01% sodium azide)

Storage Instruction Store at -20°C.
Aliquot to avoid repeated freezing and thawing.

Note

This product contains sodium azide: a POISONOUS AND HAZARDOUS SUBSTANCE which should be handled by trained staff only.

Applications

- Western Blot

Western blot analysis using ELK1 monoclonal antibody, clone 7E10D5, 7E10E8 (Cat # MAB5580) against truncated recombinant ELK1 (Lane 1) and K-562 cell lysate (Lane 2).

- Enzyme-linked Immunoabsorbent Assay

Publication Reference

- [PKCalpha expression regulated by Elk-1 and MZF-1 in human HCC cells.](#)

Hsieh YH, Wu TT, Tsai JH, Huang CY, Hsieh YS, Liu JY.

Biochemical and Biophysical Research Communications 2006 Jan; 339(1):217.

Application: ChIP, Human, HA22T/VGH cells

- [ERK phosphorylation potentiates Elk-1-mediated ternary complex formation and transactivation.](#)

Gille H, Kortenjann M, Thomae O, Moomaw C, Slaughter C, Cobb MH, Shaw PE.

The EMBO Journal 1995 Mar; 14(5):951.

Application: Func, WB-Re, Monkey, COS cells, Recombinant proteins

- [elk, tissue-specific ets-related genes on chromosomes X and 14 near translocation breakpoints.](#)

Rao VN, Huebner K, Isobe M, ar-Rushdi A, Croce CM, Reddy ES.

Science 1989 Apr; 244(4900):66.