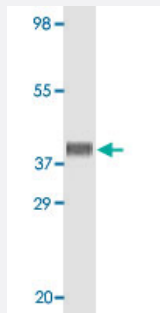


MB monoclonal antibody, clone 6H8B5, 5A2G8, 4D7H3, 3H6A7

Catalog # MAB5539

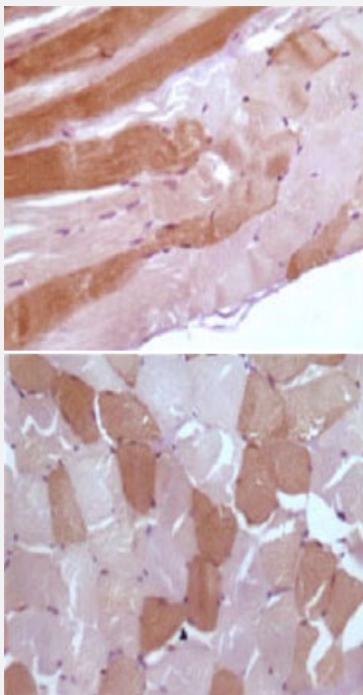
Size 100 ug

Applications



Western Blot (Recombinant protein)

Western blot analysis using MB monoclonal antibody, clone 6H8B5,5A2G8,4D7H3,3H6A7 (Cat # MAB5539) against truncated MB recombinant protein (GST-tag).



Immunohistochemistry (Formalin/PFA-fixed paraffin-embedded sections)

Immunohistochemical analysis of paraffin-embedded human skeletal muscle tissue, showing nuclear and cytoplasmic localization using MB monoclonal antibody, clone 6H8B5, 5A2G8, 4D7H3, 3H6A7 (Cat # MAB5539) with DAB staining.

Specification

Product Description	Mouse monoclonal antibody raised against partial recombinant MB.
Immunogen	Recombinant protein corresponding to human MB.

Host	Mouse
Reactivity	Human
Form	Liquid
Isotype	IgG1
Recommend Usage	Western Blot (1:500-1:2000) Immunohistochemistry (Formalin/PFA-fixed paraffin-embedded sections) (1:500-1:2000) Immunohistochemistry (Frozen sections) (1:500-1:2000) ELISA (1:10000) The optimal working dilution should be determined by the end user.
Storage Buffer	In PBS, pH 7.2 (50% glycerol, 0.01% sodium azide)
Storage Instruction	Store at -20°C. Aliquot to avoid repeated freezing and thawing.
Note	This product contains sodium azide: a POISONOUS AND HAZARDOUS SUBSTANCE which should be handled by trained staff only.

Applications

- Western Blot (Recombinant protein)

Western blot analysis using MB monoclonal antibody, clone 6H8B5,5A2G8,4D7H3,3H6A7 (Cat # MAB5539) against truncated MB recombinant protein (GST-tag).

- Immunohistochemistry (Formalin/PFA-fixed paraffin-embedded sections)

Immunohistochemical analysis of paraffin-embedded human skeletal muscle tissue, showing nuclear and cytoplasmic localization using MB monoclonal antibody, clone 6H8B5, 5A2G8, 4D7H3, 3H6A7 (Cat # MAB5539) with DAB staining.

- Immunohistochemistry (Frozen sections)

- Enzyme-linked Immunoabsorbent Assay

Gene Info — MB

Entrez GeneID	4151
Gene Name	MB
Gene Alias	MGC13548, PVALB

Gene Description	myoglobin
Omim ID	160000
Gene Ontology	Hyperlink
Gene Summary	This gene encodes a member of the globin superfamily and is expressed in skeletal and cardiac muscles. The encoded protein is a haemoprotein contributing to intracellular oxygen storage and transcellular facilitated diffusion of oxygen. At least three alternatively spliced transcript variants encoding the same protein have been reported. [provided by RefSeq]
Other Designations	-

Publication Reference

- [Lack of myoglobin causes a switch in cardiac substrate selection.](#)

Flogel U, Laussmann T, Godecke A, Abanador N, Schafers M, Fingas CD, Metzger S, Levkau B, Jacoby C, Schrader J.
Circulation Research 2005 Apr; 96(8):e68.

- [Myoglobin: an essential hemoprotein in striated muscle.](#)

Ordway GA, Garry DJ.
The Journal of Experimental Biology 2004 Sep; 207(Pt 20):3441.

Application: IHC, WB, Human, Mouse, C2C12 cells, Skeletal muscles