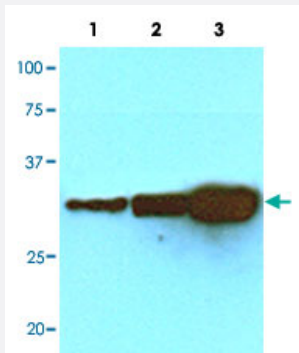


GFP monoclonal antibody, clone AT2G5

Catalog # MAB5377 Size 100 uL

Applications



Western Blot (Recombinant protein)

Western blot analysis of recombinant protein GFP (20, 40 and 80 ng) were resolved by SDS-PAGE, transferred to NC membrane and probed with GFP monoclonal antibody, clone AT2G5 (Cat # MAB5377) (1 : 1000).

Proteins were visualized using a goat anti-mouse secondary antibody conjugated to HRP and an ECL detection system.

Lane 1 : GFP 20 ng.

Lane 2 : GFP 40 ng.

Lane 3 : GFP 80 ng.

Specification

Product Description	Mouse monoclonal antibody raised against full length recombinant GFP.
Immunogen	Recombinant protein corresponding to full length <i>Aequorea Victoria</i> GFP.
Host	Mouse
Form	Liquid
Purification	Protein G purification
Isotype	IgG2a, kappa
Quality Control Testing	Antibody Reactive Against Recombinant Protein.
Recommend Usage	ELISA Western Blot The optimal working dilution should be determined by the end user.
Storage Buffer	In PBS, pH 7.4 (10% glycerol, 0.02% sodium azide).

Storage Instruction

Store at 2°C to 8°C for 1 week. For long term storage, aliquot and store at -20°C to -80°C.
Aliquot to avoid repeated freezing and thawing.

Note

This product contains sodium azide: a POISONOUS AND HAZARDOUS SUBSTANCE which should be handled by trained staff only.

Applications

- Western Blot (Recombinant protein)

Western blot analysis of recombinant protein GFP (20, 40 and 80 ng) were resolved by SDS-PAGE, transferred to NC membrane and probed with GFP monoclonal antibody, clone AT2G5 (Cat # MAB5377) (1 : 1000).
Proteins were visualized using a goat anti-mouse secondary antibody conjugated to HRP and an ECL detection system.
Lane 1 : GFP 20 ng.
Lane 2 : GFP 40 ng.
Lane 3 : GFP 80 ng.

- Enzyme-linked Immunoabsorbent Assay

Publication Reference

- [Green fluorescent protein--a bright idea for the study of bacterial protein localization.](#)

Phillips GJ.

FEMS Microbiology Letters 2001 Oct; 204(1):9.

- [The green fluorescent protein.](#)

Tsien RY.

Annual Review of Biochemistry 1998 Jan; 67:509.

Application: WB-Tr, Human, Mammalian cells

- [Primary structure of the Aequorea victoria green-fluorescent protein.](#)

Prasher DC, Eckenrode VK, Ward WW, Prendergast FG, Cormier MJ.

Gene 1992 Feb; 111(2):229.