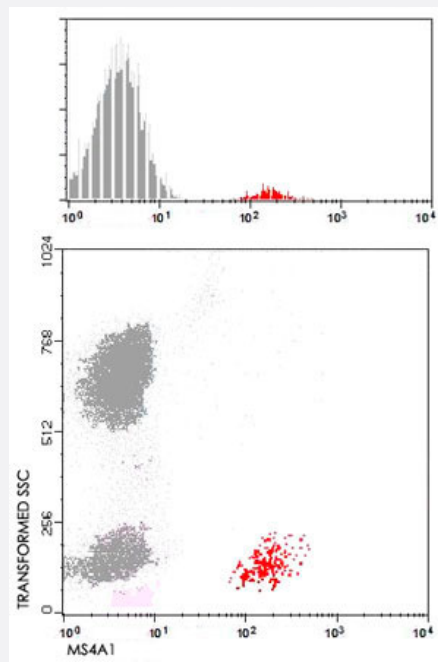


MS4A1 monoclonal antibody, clone BC1

Catalog # MAB4973 Size 100 ug

Applications



Flow Cytometry

Flow Cytometry using human peripheral blood cells (1 ug/10⁶ cells).
FACSCalibur (Becton Dickinson, San Jose, CA) flow cytometer, using Cell Quest acquisition software and PAINT-A-GATE. PRO, analysis software.

Specification

Product Description	Mouse monoclonal antibody raised against MS4A1.
Immunogen	Normal human lymphocytes from lymph node.
Host	Mouse
Reactivity	Human
Form	Liquid
Purification	Protein A/G purification
Isotype	IgM

Recommend Usage	Flow Cytometry (20 μ L/ 10^6 cells) The optimal working dilution should be determined by the end user.
Storage Buffer	In buffer containing 1% BSA, pH 7.2 (0.09% sodium azide).
Storage Instruction	Store at -20°C. Aliquot to avoid repeated freezing and thawing.
Note	This product contains sodium azide: a POISONOUS AND HAZARDOUS SUBSTANCE which should be handled by trained staff only.

Applications

- Immunohistochemistry
- Immunofluorescence
- Flow Cytometry

Flow Cytometry using human peripheral blood cells (1 μ g/ 10^6 cells).

FACSCalibur (Becton Dickinson, San Jose, CA) flow cytometer, using Cell Quest acquisition software and PAINT-A-GATE. PRO, analysis software.

Gene Info — MS4A1

Entrez GeneID	931
Gene Name	MS4A1
Gene Alias	B1, Bp35, CD20, LEU-16, MGC3969, MS4A2, S7
Gene Description	membrane-spanning 4-domains, subfamily A, member 1
Omim ID	112210
Gene Ontology	Hyperlink
Gene Summary	This gene encodes a member of the membrane-spanning 4A gene family. Members of this nascent protein family are characterized by common structural features and similar intron/exon splice boundaries and display unique expression patterns among hematopoietic cells and nonlymphoid tissues. This gene encodes a B-lymphocyte surface molecule which plays a role in the development and differentiation of B-cells into plasma cells. This family member is localized to 11q12, among a cluster of family members. Alternative splicing of this gene results in two transcript variants which encode the same protein. [provided by RefSeq]
Other Designations	B-lymphocyte cell-surface antigen B1 CD20 antigen CD20 receptor

Publication Reference

- [Bone marrow stroma-derived prolactin is involved in basal and platelet-activating factor-stimulated in vitro erythropoiesis.](#)

Bellone G, Astarita P, Artusio E, Silvestri S, Mareschi K, Turletti A, Buttiglieri S, Emanuelli G, Matera L.

Blood 1997 Jul; 90(1):21.

Application: Treated, Recombinant protein

Pathway

- [Hematopoietic cell lineage](#)

Disease

- [Breast cancer](#)
- [Breast Neoplasms](#)
- [Genetic Predisposition to Disease](#)
- [Lymphoma](#)
- [Neoplasm Recurrence](#)
- [Ovarian cancer](#)