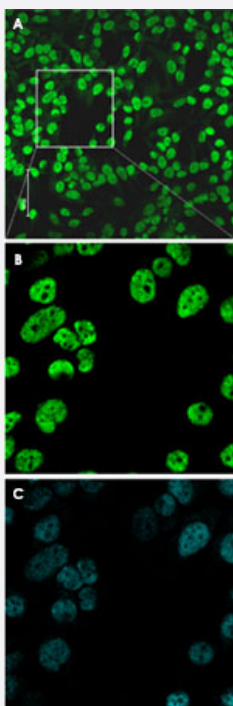


# 5-meC monoclonal antibody, clone 33D3

Catalog # MAB4951      Size 100 ug

## Applications



### Immunofluorescence

Indirect immunofluorescence results obtained with 5-meC monoclonal antibody, clone 33D3 (Cat # MAB4951).

A. HeLa cells were immunofluorescent labelled with 5-meC monoclonal antibody, clone 33D3 (Cat # MAB4951) is diluted 1 : 100 followed by a goat anti-mouse FITC conjugated antibody. Scale bar is 75 um.

B. Enlarged picture corresponding to a region from the left panel (as indicated in A).

C. Nuclei were DAPI stained to label specifically the DNA (same region as shown in the middle panel : B).

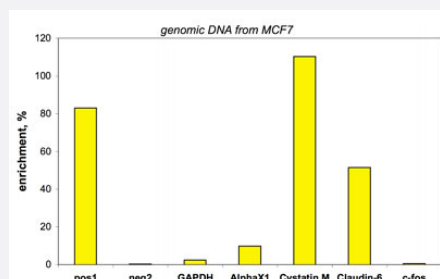
### Immunoprecipitation

Methyl DNA IP assays were performed using DNA from MCF7 cells, 5-meC monoclonal antibody, clone 33D3 (Cat # MAB4951) and optimized PCR primers pairs for qPCR.

The DNA was prepared with the GenDNA module. The IP was performed including the kit internal controls together with human DNA sample.

The internal positive and negative controls included in the IP assay are methylated DNA (meDNA) and unmethylated DNA (unDNA).

The DNA is then isolated from IP'd material using our DIB method and analysed by qPCR.



## Specification

<b>Product Description</b>	Mouse monoclonal antibody raised against 5-methylcytosine.
<b>Immunogen</b>	Ovalbumine conjugated with 5-methylcytosine.
<b>Host</b>	Mouse
<b>Reactivity</b>	Human, Mouse
<b>Form</b>	Liquid
<b>Purification</b>	Protein A purification
<b>Isotype</b>	IgG1
<b>Recommend Usage</b>	Dot Blot (1:100) Immunofluorescence (1:500) Methylated DNA Immunoprecipitation (0.5-1 ug/IP) The optimal working dilution should be determined by the end user.
<b>Storage Buffer</b>	In PBS (0.05% sodium azide).
<b>Storage Instruction</b>	Store at -20°C. For long term storage, store at -80°C. Aliquot to avoid repeated freezing and thawing.
<b>Note</b>	This product contains sodium azide: a POISONOUS AND HAZARDOUS SUBSTANCE which should be handled by trained staff only.

## Applications

### ● Immunofluorescence

Indirect immunofluorescence results obtained with 5-meC monoclonal antibody, clone 33D3 (Cat # MAB4951).

A. HeLa cells were immunofluorescent labelled with 5-meC monoclonal antibody, clone 33D3 (Cat # MAB4951) is diluted 1 : 100 followed by a goat anti-mouse FITC conjugated antibody. Scale bar is 75 um.

B. Enlarged picture corresponding to a region from the left panel (as indicated in A).

C. Nuclei were DAPI stained to label specifically the DNA (same region as shown in the middle panel : B).

### ● Immunoprecipitation

Methyl DNA IP assays were performed using DNA from MCF7 cells, 5-meC monoclonal antibody, clone 33D3 (Cat # MAB4951) and optimized PCR primers pairs for qPCR.

The DNA was prepared with the GenDNA module. The IP was performed including the kit internal controls together with human DNA sample.

The internal positive and negative controls included in the IP assay are methylated DNA (meDNA) and unmethylated DNA (unDNA).

The DNA is then isolated from IP'd material using our DIB method and analysed by qPCR.

- Dot Blot
- Methylated DNA Immunoprecipitation