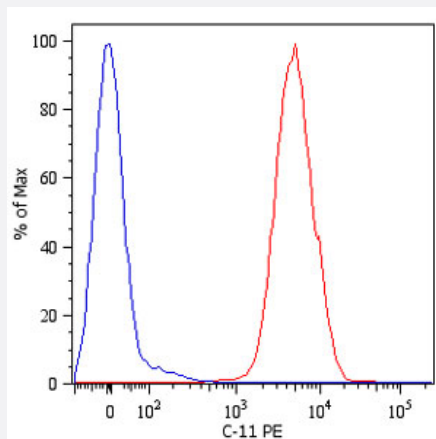


# Cytokeratin monoclonal antibody, clone C-11 (PE)

Catalog # MAB4529

Size 100 ug

## Applications



### Flow Cytometry

Intracellular flow cytometry analysis of cytokeratin expression in HT-29 (human Caucasian colon adenocarcinoma cell line) using Cytokeratin monoclonal antibody, clone C-11 (PE) (Cat # MAB4529).

Overlay with Isotype mouse IgG1 control.

## Specification

Product Description	Mouse monoclonal antibody raised against native Cytokeratin.
Immunogen	Native purified Cytokeratin from Keratin-enriched preparation of human epidermoid carcinoma cell line A431.
Host	Mouse
Reactivity	Human, Mammals
Specificity	This antibody reacts with Cytokeratin peptides 4, 5, 6, 8, 10, 13, 18.
Form	Liquid
Conjugation	PE
Concentration	0.1 mg/mL
Isotype	IgG1
Recommend Usage	The optimal working dilution should be determined by the end user.

<b>Storage Buffer</b>	In PBS (0.2% BSA, 0.09% sodium azide)
<b>Storage Instruction</b>	Store in the dark at 4°C. Do not freeze. Avoid prolonged exposure to light. Aliquot to avoid repeated freezing and thawing.
<b>Note</b>	This product contains sodium azide: a POISONOUS AND HAZARDOUS SUBSTANCE which should be handled by trained staff only.

## Applications

- **Flow Cytometry**

Intracellular flow cytometry analysis of cytokeratin expression in HT-29 (human Caucasian colon adenocarcinoma cell line) using Cytokeratin monoclonal antibody, clone C-11 (PE) (Cat # MAB4529).  
Overlay with Isotype mouse IgG1 control.

## Publication Reference

- [Determinants of tubular bone marrow-derived cell engraftment after renal ischemia/reperfusion in rats.](#)

Broekema M, Harmsen MC, Koerts JA, Petersen AH, van Luyn MJ, Navis G, Popa ER.  
Kidney International 2005 Dec; 68(6):2572.

- [A series of 14 new monoclonal antibodies to keratins: characterization and value in diagnostic histopathology.](#)

Bártek J, Vojtěšek B, Stasková Z, Bártková J, Kerekés Z, Rejthar A, Kovarik J.  
The Journal of Pathology 1991 Jul; 164(3):215.