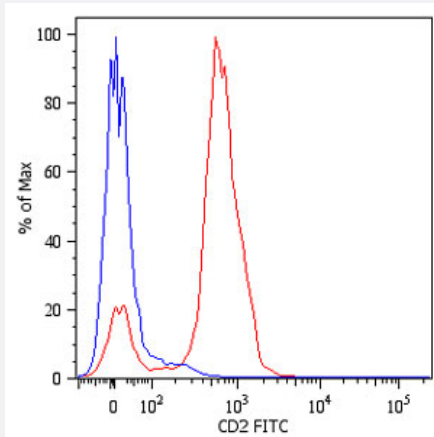


CD2 monoclonal antibody, clone LT2 (FITC)

Catalog # MAB4382 Size 100 Reactions

Applications



Flow Cytometry

Surface staining of human peripheral blood cells with CD2 monoclonal antibody, clone LT2 (FITC) (Cat # MAB4382). Cells in the lymphocyte gate were used for analysis.

Specification

Product Description	Mouse monoclonal antibody raised against native CD2.
Immunogen	Native purified CD2 from normal human blood lymphocytes.
Host	Mouse
Theoretical MW (kDa)	50
Reactivity	Human
Specificity	This antibody LT2 reacts with CD2, a 50 KDa glycoprotein present on the human peripheral blood T I lymphocytes and NK cells; also expressed by all thymocytes.
Form	Liquid
Conjugation	FITC
Isotype	IgG2a

Recommend Usage	Flow Cytometry (20 ul in human blood cells 100 ul in whole blood or 10 ⁶ cells in a suspension) The optimal working dilution should be determined by the end user.
Storage Buffer	In PBS (0.2% BSA, 0.09% sodium azide)
Storage Instruction	Store in the dark at 4°C. Do not freeze. Avoid prolonged exposure to light. Aliquot to avoid repeated freezing and thawing.
Note	This product contains sodium azide: a POISONOUS AND HAZARDOUS SUBSTANCE which should be handled by trained staff only.

Applications

- Immunoprecipitation

- Flow Cytometry

Surface staining of human peripheral blood cells with CD2 monoclonal antibody, clone LT2 (FITC) (Cat # MAB4382). Cells in the lymphocyte gate were used for analysis.

Gene Info — CD2

Entrez GeneID	914
Gene Name	CD2
Gene Alias	SRBC, T11
Gene Description	CD2 molecule
Omim ID	186990
Gene Ontology	Hyperlink
Gene Summary	sheep red blood cell receptor OTTHUMP00000024366 OTTHUMP00000059318 lymphocyte-function antigen-2
Other Designations	CD2 antigen (p50), sheep red blood cell receptor OTTHUMP00000024366 OTTHUMP00000059318 lymphocyte-function antigen-2

Publication Reference

- [CD2 deficiency partially prevents small bowel inflammation and improves parasite control in murine Toxoplasma gondii infection.](#)

Pawlowski NN, Struck D, Grollich K, Kuhl AA, Zeitz M, Liesenfeld O, Hoffmann JC.

World Journal of Gastroenterology 2007 Aug; 13(31):4207.

- [Mechanisms of Cellular Avidity Regulation in CD2-CD58-Mediated T Cell Adhesion.](#)

Zhu DM, Dustin ML, Cairo CW, Thatte HS, Golan DE.

ACS Chemical Biology 2006 Nov; 1(10):649.

- [\[A panel of monoclonal antibodies against human lymphocyte antigens\].](#)

Filatov AV, Bachurin PS, Markova NA, Surnakova NE.

Eksp Onkol 1989 Jan; 11(2):28.

Pathway

- [Cell adhesion molecules \(CAMs\)](#)
- [Hematopoietic cell lineage](#)

Disease

- [Arthritis](#)
- [Genetic Predisposition to Disease](#)