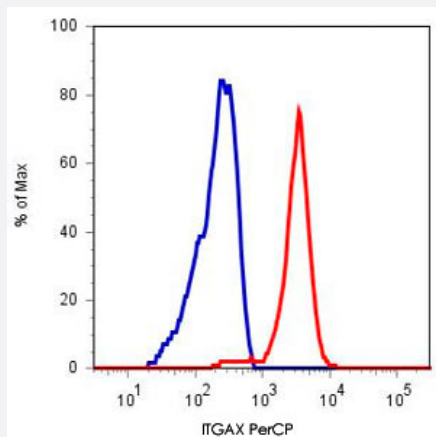


ITGAX monoclonal antibody, clone BU15 (PerCP)

Catalog # MAB4353 Size 100 Reactions

Applications



Flow Cytometry

Surface staining of human peripheral blood cells with ITGAX monoclonal antibody, clone BU15 (PerCP) (Cat # MAB4353).

Specification

Product Description	Mouse monoclonal antibody raised against native ITGAX.
Immunogen	Native purified ITGAX from human dendritic cells of synovial fluid.
Host	Mouse
Theoretical MW (kDa)	150
Reactivity	Dog, Human, Monkey
Specificity	This antibody reacts with ITGAX, a 150 KDa integrin expressed mainly on dendritic cells and tissue macrophages.
Form	Liquid
Conjugation	PerCP
Isotype	IgG1

Recommend Usage	Flow Cytometry (10 ul in human blood cells 100 ul in whole blood or 10 ⁶ cells in a suspension) The optimal working dilution should be determined by the end user.
Storage Buffer	In PBS (0.2% BSA, 0.09% sodium azide)
Storage Instruction	Store in the dark at 4°C. Do not freeze. Avoid prolonged exposure to light. Aliquot to avoid repeated freezing and thawing.
Note	This product contains sodium azide: a POISONOUS AND HAZARDOUS SUBSTANCE which should be handled by trained staff only.

Applications

- Immunohistochemistry (Frozen sections)
- Immunoprecipitation
- Flow Cytometry

Surface staining of human peripheral blood cells with ITGAX monoclonal antibody, clone BU15 (PerCP) (Cat # MAB4353).

Gene Info — ITGAX

Entrez GeneID	3687
Gene Name	ITGAX
Gene Alias	CD11C, SLEB6
Gene Description	integrin, alpha X (complement component 3 receptor 4 subunit)
Omim ID	151510
Gene Ontology	Hyperlink
Gene Summary	This gene encodes the integrin alpha X chain protein. Integrins are heterodimeric integral membrane proteins composed of an alpha chain and a beta chain. This protein combines with the beta 2 chain (ITGB2) to form a leukocyte-specific integrin referred to as inactivated-C3b (iC3b) receptor 4 (CR4). The alpha X beta 2 complex seems to overlap the properties of the alpha M beta 2 integrin in the adherence of neutrophils and monocytes to stimulated endothelium cells, and in the phagocytosis of complement coated particles. [provided by RefSeq]
Other Designations	OTTHUMP00000163299 integrin alpha X integrin, alpha X (antigen CD11C (p150), alpha polypeptide) leu M5, alpha subunit leukocyte surface antigen p150,95, alpha subunit myeloid membrane antigen, alpha subunit p150 95 integrin alpha chain

Publication Reference

- [Novel tools for functional analysis of CD11c: activation-specific, activation-independent, and activating antibodies.](#)
Sadhu C, Hendrickson L, Dick KO, Potter TG, Staunton DE.
Journal of Immunoassay & Immunochemistry 2008 Jan; 29(1):42.
- [Regulation of adhesion of AML14.3D10 cells by surface clustering of beta2-integrin caused by ERK-independent activation of cPLA2.](#)
Myou S, Zhu X, Boetticher E, Qin Y, Myo S, Meliton A, Lambertino A, Munoz NM, Hamann KJ, Leff AR.
Immunology 2002 Sep; 107(1):77.
- [Ligation of CD11b and CD11c beta\(2\) integrins by antibodies or soluble CD23 induces macrophage inflammatory protein 1alpha \(MIP-1alpha\) and MIP-1beta production in primary human monocytes through a pathway dependent on nuclear factor-kappaB.](#)
Rezzonico R, Imbert V, Chicheportiche R, Dayer JM.
Blood 2001 May; 97(10):2932.

Pathway

- [Regulation of actin cytoskeleton](#)

Disease

- [Genetic Predisposition to Disease](#)
- [Helicobacter Infections](#)
- [Lupus Erythematosus](#)
- [Stomach Ulcer](#)