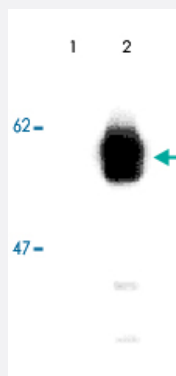


RIPK3 monoclonal antibody, clone Rippy-3

Catalog # MAB3728

Size 100 ug

Applications



Western Blot (Transfected lysate)

Detection of human RIPK3. HEK 293T cells (5 X 10⁵) mock transfected (lane 1) or transfected (lane 2) with an expression plasmid coding for human RIPK3. Incubated with the RIPK3 monoclonal antibody, clone Rippy-3 (Cat # MAB3728) at a 1 : 1,000 dilution.

Specification

Product Description	Mouse monoclonal antibody raised against recombinant RIPK3.
Immunogen	Recombinant protein corresponding to human RIPK3.
Host	Mouse
Reactivity	Human
Specificity	Recognizes human RIP3.
Form	Liquid
Isotype	IgG1
Recommend Usage	The optimal working dilution should be determined by the end user.
Storage Buffer	In PBS (0.02% sodium azide)
Storage Instruction	Store at 4°C. For long term storage store at -20°C. Aliquot to avoid repeated freezing and thawing.

Note

This product contains sodium azide: a POISONOUS AND HAZARDOUS SUBSTANCE which should be handled by trained staff only.

Applications

- Western Blot (Transfected lysate)

Detection of human RIPK3. HEK 293T cells (5×10^5) mock transfected (lane 1) or transfected (lane 2) with an expression plasmid coding for human RIPK3. Incubated with the RIPK3 monoclonal antibody, clone Rippy-3 (Cat # MAB3728) at a 1 : 1,000 dilution.

Gene Info — RIPK3

Entrez GeneID [11035](#)

Gene Name RIPK3

Gene Alias RIP3

Gene Description receptor-interacting serine-threonine kinase 3

Omim ID [605817](#)

Gene Ontology [Hyperlink](#)

Gene Summary The product of this gene is a member of the receptor-interacting protein (RIP) family of serine/threonine protein kinases, and contains a C-terminal domain unique from other RIP family members. The encoded protein is predominantly localized to the cytoplasm, and can undergo nucleocytoplasmic shuttling dependent on novel nuclear localization and export signals. It is a component of the tumor necrosis factor (TNF) receptor-I signaling complex, and can induce apoptosis and weakly activate the NF-kappaB transcription factor. [provided by RefSeq]

Other Designations RIP-like protein kinase 3|receptor interacting protein 3

Disease

- [Cleft Lip](#)
- [Cleft Palate](#)
- [Genetic Predisposition to Disease](#)
- [Inflammation](#)
- [Lymphoma](#)