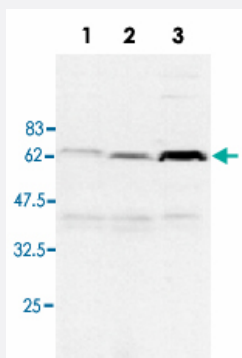


# RIPK2 monoclonal antibody, clone Nick-1

Catalog # MAB3727      Size 100 ug

## Applications



### Western Blot (Cell lysate)

Detection of endogenous human RIPK2 in different human cell lines by RIPK2 monoclonal antibody, clone Nick-1 (Cat # MAB3727). Total cell extracts (50 ug) from Jurkat (lane 1), THP-1 (lane 2) and HT-1080 (lane 3).

## Specification

<b>Product Description</b>	Rat monoclonal antibody raised against partial recombinant RIPK2.
<b>Immunogen</b>	Recombinant protein corresponding to amino acids 1-322 of human RIPK2.
<b>Host</b>	Rat
<b>Reactivity</b>	Human
<b>Specificity</b>	Recognizes human RIP2.
<b>Form</b>	Liquid
<b>Isotype</b>	IgG2a
<b>Recommend Usage</b>	The optimal working dilution should be determined by the end user.
<b>Storage Buffer</b>	In PBS (0.02% sodium azide)
<b>Storage Instruction</b>	Store at 4°C. For long term storage store at -20°C. Aliquot to avoid repeated freezing and thawing.

**Note** This product contains sodium azide: a POISONOUS AND HAZARDOUS SUBSTANCE which should be handled by trained staff only.

## Applications

- Western Blot (Cell lysate)

Detection of endogenous human RIPK2 in different human cell lines by RIPK2 monoclonal antibody, clone Nick-1 (Cat # MAB3727). Total cell extracts (50 ug) from Jurkat (lane 1), THP-1 (lane 2) and HT-1080 (lane 3).

## Gene Info — RIPK2

<b>Entrez GeneID</b>	<a href="#">8767</a>
<b>Gene Name</b>	RIPK2
<b>Gene Alias</b>	CARD3, CARDIAK, CCK, GIG30, RICK, RIP2
<b>Gene Description</b>	receptor-interacting serine-threonine kinase 2
<b>Omim ID</b>	<a href="#">603455</a>
<b>Gene Ontology</b>	<a href="#">Hyperlink</a>
<b>Gene Summary</b>	This gene encodes a member of the receptor-interacting protein (RIP) family of serine/threonine protein kinases. The encoded protein contains a C-terminal caspase activation and recruitment domain (CARD), and is a component of signaling complexes in both the innate and adaptive immune pathways. It is a potent activator of NF-kappaB and inducer of apoptosis in response to various stimuli. [provided by RefSeq]
<b>Other Designations</b>	CARD-carrying kinase CARD-containing interleukin-1 beta-converting enzyme (ICE)-associated kinase growth-inhibiting gene 30 receptor interacting protein 2 receptor-interacting protein (RIP)-like interacting caspase-like apoptosis regulatory protein (CLARP)

## Pathway

- [Neurotrophin signaling pathway](#)

## Disease

- [Genetic Predisposition to Disease](#)

- [Hematologic Diseases](#)
- [Hodgkin Disease](#)
- [Leprosy](#)
- [Lymphoma](#)
- [Lymphoproliferative Disorders](#)
- [Occupational Diseases](#)
- [Waldenstrom Macroglobulinemia](#)
- [Werner syndrome](#)