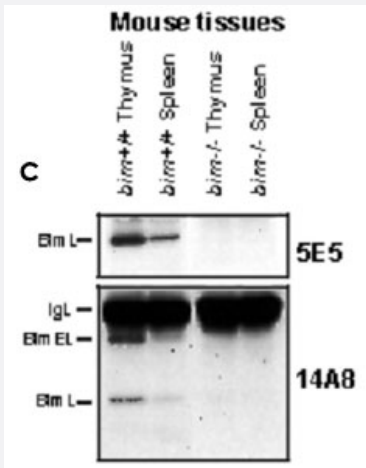


Bcl2l11 monoclonal antibody, clone 14A8

Catalog # MAB3704 Size 100 ug

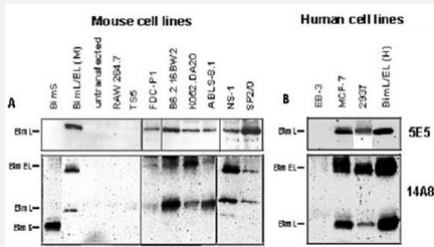
Applications



Western Blot

IP/Western blot analysis of Bim expression in (C) depicts the ability of Bcl2l11 monoclonal antibody, clone 14A8 (Cat # MAB3704) to immunoprecipitate BimL and BimEL from lysates of spleen and thymus from normal mice, but not from Bim-deficient mice.

Immunoprecipitation



IP/Western blot analysis of Bim expression in mouse (A) and human (B) cell lines. Bim proteins were immunoprecipitated from lysates of 107 cells with Bcl2l11 monoclonal antibody, clone 14A8 (Cat # MAB3704) and Bcl2l11 monoclonal antibody, clone 5E5 (Cat # MAB3705).

Western blot analysis was performed with MAB3704 and MAB3705 followed by the addition of biotinylated mouse anti-rat IgG2b antibody and HRP-conjugated mouse anti-rat IgG2a antibody as the respective secondary antibodies, and ECL detection.

Specification

Product Description Rat monoclonal antibody raised against recombinant Bcl2l11.

Immunogen Recombinant protein corresponding to mouse Bcl2l11.

Host Rat

Reactivity Human, Monkey, Mouse

Specificity	Recognizes human, mouse and monkey BimL, BimEL and BimS.
Form	Liquid
Isotype	IgG2a
Recommend Usage	The optimal working dilution should be determined by the end user.
Storage Buffer	In PBS (0.02% sodium azide)
Storage Instruction	Store at 4°C. For long term storage store at -20°C. Aliquot to avoid repeated freezing and thawing.
Note	This product contains sodium azide: a POISONOUS AND HAZARDOUS SUBSTANCE which should be handled by trained staff only.

Applications

- Western Blot

IP/Western blot analysis of Bim expression in (C) depicts the ability of Bcl2l11 monoclonal antibody, clone 14A8 (Cat # MAB3704) to immunoprecipitate BimL and BimEL from lysates of spleen and thymus from normal mice, but not from Bim-deficient mice.

- Immunohistochemistry (Formalin/PFA-fixed paraffin-embedded sections)

- Immunocytochemistry

- Immunoprecipitation

IP/Western blot analysis of Bim expression in mouse (A) and human (B) cell lines. Bim proteins were immunoprecipitated from lysates of 10^7 cells with Bcl2l11 monoclonal antibody, clone 14A8 (Cat # MAB3704) and Bcl2l11 monoclonal antibody, clone 5E5 (Cat # MAB3705).

Western blot analysis was performed with MAB3704 and MAB3705 followed by the addition of biotinylated mouse anti-rat IgG2b antibody and HRP-conjugated mouse anti-rat IgG2a antibody as the respective secondary antibodies, and ECL detection.

- Flow Cytometry

Gene Info — Bcl2l11

Entrez GeneID	12125
Gene Name	Bcl2l11
Gene Alias	1500006F24Rik, Bim, Bod

Gene Description	BCL2-like 11 (apoptosis facilitator)
Gene Ontology	Hyperlink
Other Designations	BCL2-like 11 apoptosis facilitator Bcl2 interacting mediator of cell death OTTMUSP00000016362 OTTMUSP00000016364 OTTMUSP00000016365