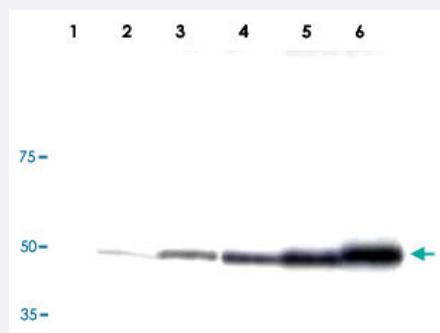


Tubulin-beta monoclonal antibody, clone TU-06

Catalog # MAB3656

Size 100 ug

Applications

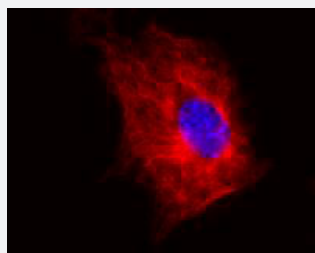


Western Blot (Cell lysate)

Western Blotting analysis (reducing conditions) of HPB-ALL (human peripheral blood leukemia cell line).

Lane 1 : Negative control.

Lane 2, 3, 4, 5, 6 : Immunostaining with TUBB1 monoclonal antibody, clone TU-06 (Cat # MAB3656 ; dilution 0,5 ug/mL , 1 ug/mL , 2 ug/mL , 4 ug/mL , 5 ug/mL).



Immunofluorescence

Immunofluorescence staining of NIH/3T3 (mouse embryonal fibroblast cell line) using TUBB1 monoclonal antibody, clone TU-06 (Cat # MAB3656) (detection by Goat anti-mouse IgM Cy®5). Nucleus is stained with DAPI (blue).

Specification

Product Description	Mouse monoclonal antibody raised against native Tubulin-beta.
Immunogen	Native purified porcine Tubulin-beta.
Host	Mouse
Reactivity	Pig
Specificity	This antibody recognizes an epitope (aa 81-95) on phylogenetically conserved N-terminal structural domain of beta-tubulin (recognizes all beta-tubulin isoforms) in various species.
Form	Liquid

Concentration	1 mg/mL
Isotype	IgM
Recommend Usage	Immunocytochemistry (2 ug/mL) Western Blot (1 ug/mL) Immunohistochemistry (Formalin/PFA-fixed paraffin-embedded sections) (5 ug/mL) The optimal working dilution should be determined by the end user.
Storage Buffer	In TBS, pH 8.0 (0.09% sodium azide)
Storage Instruction	Store at 4°C. Do not freeze.
Note	This product contains sodium azide: a POISONOUS AND HAZARDOUS SUBSTANCE which should be handled by trained staff only.

Applications

- Western Blot (Cell lysate)

Western Blotting analysis (reducing conditions) of HPB-ALL (human peripheral blood leukemia cell line).

Lane 1 : Negative control.

Lane 2, 3, 4, 5, 6 : Immunostaining with TUBB1 monoclonal antibody, clone TU-06 (Cat # MAB3656 ; dilution 0,5 ug/mL , 1 ug/mL , 2 ug/mL , 4 ug/mL , 5 ug/mL).

- Immunohistochemistry (Formalin/PFA-fixed paraffin-embedded sections)

- Immunocytochemistry

- Immunofluorescence

Immunofluorescence staining of NIH/3T3 (mouse embryonal fibroblast cell line) using TUBB1 monoclonal antibody, clone TU-06 (Cat # MAB3656) (detection by Goat anti-mouse IgM Cy®5). Nucleus is stained with DAPI (blue).

Publication Reference

- [Engineered early embryonic cardiac tissue retains proliferative and contractile properties of developing embryonic myocardium.](#)

Tobita K, Liu LJ, Janczewski AM, Tinney JP, Nonemaker JM, Augustine S, Stolz DB, Shroff SG, Keller BB.

American Journal of Physiology. Heart and Circulatory Physiology 2006 Oct; 291(4):H1829.

Application: IF, Chicken, Embryonic cardiac tissue

- [Distinct localization of a beta-tubulin epitope in the Tetrahymena thermophila and Paramecium caudatum cortex.](#)

Libusová L, Sulimenko T, Sulimenko V, Janisch R, Hozák P, Dráber P.

Protoplasma 2005 Oct; 225(3-4):157.

Application: IEM, IF, WB, Mouse, Parasite, NIH/3T3 cells, T. thermophila cortical region

- [Par6alpha signaling controls glial-guided neuronal migration.](#)

Solecki DJ, Model L, Gaetz J, Kapoor TM, Hatten ME.

Nature Neuroscience 2004 Nov; 7(11):1195.

Application: ICC, Mouse, Cerebellar granule neurons