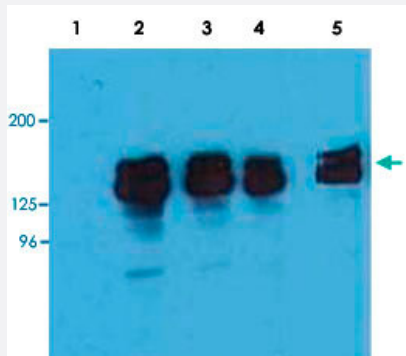


INPP5D monoclonal antibody, clone SHIP-02

Catalog # MAB3646

Size 100 ug

Applications



Western Blot (Cell lysate)

Western Blotting analysis (reducing conditions) of human INPP5D in whole cell lysate of THP-1 (human acute monocytic leukemia cell line).

Lane 1 : Immunostaining with Isotype mouse IgG1 control.

Lane 2, 3 : Immunostaining with INPP5D monoclonal antibody, clone SHIP-01 (Cat # MAB3645) Lane 4, 5 : Immunostaining with INPP5D monoclonal antibody, clone SHIP-02 (Cat # MAB3646).

Specification

Product Description	Mouse monoclonal antibody raised against synthetic peptide of INPP5D.
Immunogen	A synthetic peptide corresponding to N-terminus human INPP5D.
Host	Mouse
Theoretical MW (kDa)	110, 125, 130, 135,
Reactivity	Human
Specificity	This antibody reacts with SHIP-1, a phosphoinositide phosphatase largely confined to hematopoietic cells. Multiple forms of SHIP-1 have been reported with molecular weights of 110, 125, 130, 135 and 145 KDa.
Form	Liquid
Isotype	IgG2a
Recommend Usage	Flow Cytometry (2-5 ug/mL) The optimal working dilution should be determined by the end user.
Storage Buffer	In PBS, pH 7.4 (0.09% sodium azide)

Storage Instruction

Store at 4°C. Do not freeze.
Aliquot to avoid repeated freezing and thawing.

Note

This product contains sodium azide: a POISONOUS AND HAZARDOUS SUBSTANCE which should be handled by trained staff only.

Applications

- Western Blot (Cell lysate)

Western Blotting analysis (reducing conditions) of human INPP5D in whole cell lysate of THP-1 (human acute monocytic leukemia cell line).

Lane 1 : Immunostaining with Isotype mouse IgG1 control.

Lane 2, 3 : Immunostaining with INPP5D monoclonal antibody, clone SHIP-01 (Cat # MAB3645) Lane 4, 5 : Immunostaining with INPP5D monoclonal antibody, clone SHIP-02 (Cat # MAB3646).

- Flow Cytometry

Gene Info — INPP5D

Entrez GeneID[3635](#)**Gene Name**

INPP5D

Gene Alias

MGC104855, MGC142140, MGC142142, SHIP, SHIP1, SIP-145, hp51CN

Gene Description

inositol polyphosphate-5-phosphatase, 145kDa

Omim ID[601582](#)**Gene Ontology**[Hyperlink](#)**Gene Summary**

This gene is a member of the inositol polyphosphate-5-phosphatase (INPP5) family and encodes a protein with an N-terminal SH2 domain, an inositol phosphatase domain, and two C-terminal protein interaction domains. Expression of this protein is restricted to hematopoietic cells where its movement from the cytosol to the plasma membrane is mediated by tyrosine phosphorylation. At the plasma membrane, the protein hydrolyzes the 5' phosphate from phosphatidylinositol (3,4,5)-trisphosphate and inositol-1,3,4,5-tetrakisphosphate, thereby affecting multiple signaling pathways. Overall, the protein functions as a negative regulator of myeloid cell proliferation and survival. Alternative transcriptional splice variants, encoding different isoforms, have been characterized. [provided by RefSeq]

Other Designations

SH2 containing inositol phosphatase|SH2 containing inositol phosphatase, isoform b|p150Ship|signaling inositol polyphosphate 5 phosphatase SIP-145

Publication Reference

- [Tissue expression and enzymologic characterization of human prostate specific membrane antigen and its rat and pig orthologs.](#)

Rovenska M, Hlouchova K, Sacha P, Mlcochova P, Horak V, Zamecnik J, Barinka C, Konvalinka J.

Prostate 2008 Feb; 68(2):171.

- [Expression of glutamate carboxypeptidase II in human brain.](#)

Sácha P, Zámečník J, Barinka C, Hlouchová K, Vícha A, Mlcochová P, Hilgert I, Eckschlager T, Konvalinka J.

Neuroscience 2007 Feb; 144(4):1361.

- [Structure of glutamate carboxypeptidase II, a drug target in neuronal damage and prostate cancer.](#)

Mesters JR, Barinka C, Li W, Tsukamoto T, Majer P, Slusher BS, Konvalinka J, Hilgenfeld R.

The EMBO Journal 2006 Mar; 25(6):1375.

Pathway

- [B cell receptor signaling pathway](#)
- [Fc epsilon RI signaling pathway](#)
- [Fc gamma R-mediated phagocytosis](#)
- [Insulin signaling pathway](#)
- [Phosphatidylinositol signaling system](#)

Disease

- [Cardiovascular Diseases](#)
- [Diabetes Mellitus](#)
- [Edema](#)
- [Hepatitis C](#)
- [Tobacco Use Disorder](#)