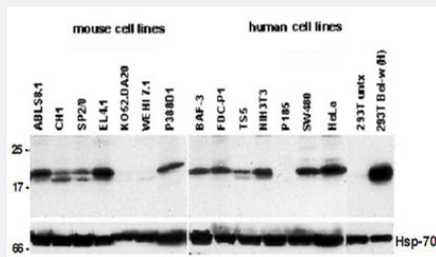


BCL2L2 monoclonal antibody, clone 13F9

Catalog # MAB3487 Size 100 ug

Applications



Immunoprecipitation

IP/Western blot showing the detection of BCL2L2 in human and mouse cell lines. Lysates from 107 cells were immunoprecipitated by clone 13F9 and the fractionated proteins were then blotted with BCL2L2 monoclonal antibody, clone 13F9 (Cat # MAB3487). Hsp-70 expression was used as an equal loading control and 293T cells transiently transfected with a human bcl-w expression construct were used as a positive control.

Specification

Product Description	Rat monoclonal antibody raised against full length recombinant BCL2L2.
Immunogen	Recombinant His fusion protein corresponding to full length human BCL2L2.
Host	Rat
Reactivity	Dog, Human, Monkey, Mouse, Rat
Form	Liquid
Isotype	IgG2a
Recommend Usage	The optimal working dilution should be determined by the end user.
Storage Buffer	In PBS (0.02% sodium azide)
Storage Instruction	Store at 4°C. For long term storage store at -20°C. Aliquot to avoid repeated freezing and thawing.
Note	This product contains sodium azide: a POISONOUS AND HAZARDOUS SUBSTANCE which should be handled by trained staff only.

Applications

- Immunoprecipitation

IP/Western blot showing the detection of BCL2L2 in human and mouse cell lines. Lysates from 10^7 cells were immunoprecipitated by clone 13F9 and the fractionated proteins were then blotted with BCL2L2 monoclonal antibody, clone 13F9 (Cat # MAB3487). Hsp-70 expression was used as an equal loading control and 293T cells transiently transfected with a human bcl-w expression construct were used as a positive control.

Gene Info — BCL2L2

Entrez GeneID	599
Gene Name	BCL2L2
Gene Alias	BCL-W, BCLW, KIAA0271
Gene Description	BCL2-like 2
Omim ID	601931
Gene Ontology	Hyperlink
Gene Summary	This gene encodes a member of the BCL-2 protein family. The proteins of this family form hetero- or homodimers and act as anti- and pro-apoptotic regulators. Expression of this gene in cells has been shown to contribute to reduced cell apoptosis under cytotoxic conditions. Studies of the related gene in mice indicated a role in the survival of NGF- and BDNF-dependent neurons. Mutation and knockout studies of the mouse gene demonstrated an essential role in adult spermatogenesis. [provided by RefSeq]
Other Designations	BCL2-like 2 protein apoptosis regulator BCL-W

Disease

- [Azoospermia](#)
- [Cardiovascular Diseases](#)
- [Diabetes Mellitus](#)
- [Edema](#)
- [Genetic Predisposition to Disease](#)
- [Head and Neck Neoplasms](#)
- [Hodgkin Disease](#)

- [Infertility](#)
- [Leukemia](#)
- [Lymphoma](#)
- [Lymphoproliferative Disorders](#)
- [Neoplasm Recurrence](#)
- [Neoplasms](#)
- [Neovascularization](#)
- [Oligospermia](#)
- [Waldenstrom Macroglobulinemia](#)
- [Werner syndrome](#)