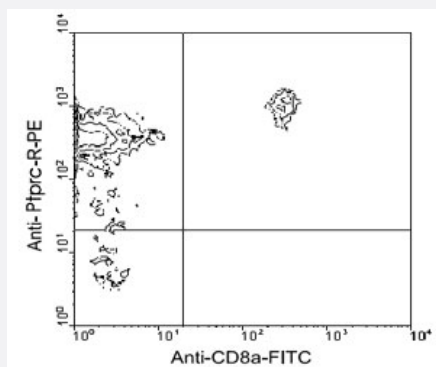


Ptpcr exon B-dependent form monoclonal antibody, clone C363.16A

Catalog # MAB3233

Size 500 ug

Applications



Flow Cytometry

BALB/c splenocytes were double-stained with Ptpcr exon B-dependent form monoclonal antibody, clone C363.16A (Cat # MAB3233)-R-phycoerythrin and rat anti-mouse CD8a-FITC. Small lymphocytes were then gated and analyzed on a FACScan™ flow cytometer (BDIS, San Jose, CA).

Specification

Product Description	Rat monoclonal antibody raised against Ptpcr exon B-dependent form.
Immunogen	Cloned mouse Th2 cell lines.
Host	Rat
Reactivity	Mouse
Specificity	An exon B-dependent epitope of CD45 glycoprotein.
Form	Liquid
Isotype	IgG2a
Recommend Usage	The optimal working dilution should be determined by the end user.
Storage Buffer	In 100 mM BBS, pH 8.2
Storage Instruction	Store at 4°C.

Applications

- Immunoprecipitation
- Flow Cytometry

BALB/c splenocytes were double-stained with Ptpcr exon B-dependent form monoclonal antibody, clone C363.16A (Cat # MAB3233)-R-phycoerythrin and rat anti-mouse CD8a-FITC. Small lymphocytes were then gated and analyzed on a FACScan™ flow cytometer (BDIS, San Jose, CA).

Gene Info — Ptpcr

Entrez GeneID [19264](#)

Gene Name Ptpcr

Gene Alias B220, CD45R, Cd45, Ly-5, Lyl-4, T200, loc

Gene Description protein tyrosine phosphatase, receptor type, C

Gene Ontology [Hyperlink](#)

Gene Summary receptor type

Other Designations lymphocyte common antigen

Publication Reference

- [Expression of variable exon A-, B-, and C-specific CD45 determinants on peripheral and thymic T cell populations.](#)

Hathcock KS, Laszlo G, Dickler HB, Sharrow SO, Johnson P, Trowbridge IS, Hodes RJ.

Journal of Immunology 1992 Jan; 148(1):19.

- [A monoclonal antibody to murine CD45R distinguishes CD4 T cell populations that produce different cytokines.](#)

Bottomly K, Luqman M, Greenbaum L, Carding S, West J, Pasqualini T, Murphy DB.

European Journal of Immunology 1989 Apr; 19(4):617.

Application: IP, Mouse, Mouse CD4+ T cells, thymocytes, spleen cells

- [Identification of the alternatively spliced exons of murine CD45 \(T200\) required for reactivity with B220 and other T200-restricted antibodies.](#)

Johnson P, Greenbaum L, Bottomly K, Trowbridge IS.

The Journal of Experimental Medicine 1989 Mar; 169(3):1179.

Application: Flow Cyt, Mouse, Ψ2 cells