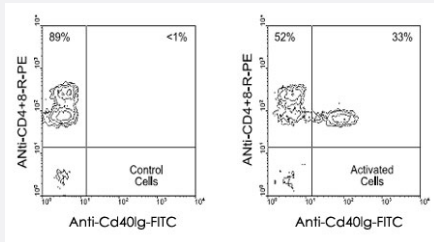


# Cd40lg monoclonal antibody, clone MR1

Catalog # MAB3231

Size 500 ug

## Applications



### Flow Cytometry

Partially purified spleen T cells from BALB/c mice were incubated with either hamster IgG or plate-bound Cd3e monoclonal antibody, clone 145-2C11 for 7 hours at 37°C. The cells were then harvested, double-stained with Cd40lg monoclonal antibody, clone MR1 (Cat # MAB3231)-FITC and anti-CD4+8-R-PE, and analyzed by flow cytometry.

## Specification

**Product Description** Hamster monoclonal antibody raised against Cd40lg.

**Immunogen** Native Cd40lg from mouse Th1 clone D1.6.

**Host** Hamster

**Reactivity** Mouse

**Specificity** CD154 (Mouse CD40 ligand/gp39), Mr 39-KDa.

**Form** Liquid

**Isotype** IgG

**Recommend Usage** The optimal working dilution should be determined by the end user.

**Storage Buffer** In 100 mM BBS, pH 8.2

**Storage Instruction** Store at 4°C.

## Applications

- Immunoprecipitation

- Flow Cytometry

Partially purified spleen T cells from BALB/c mice were incubated with either hamster IgG or plate-bound Cd3e monoclonal antibody, clone 145-2C11 for 7 hours at 37°C. The cells were then harvested, double-stained with Cd40lg monoclonal antibody, clone MR1 (Cat # MAB3231)-FITC and anti-CD4+8-R-PE, and analyzed by flow cytometry.

## Gene Info — Cd40lg

**Entrez GeneID** [21947](#)

**Gene Name** Cd40lg

**Gene Alias** CD154, Cd40l, HIGM1, IGM, IMD3, Ly-62, Ly62, T-BAM, TRAP, Tnfsf5, gp39

**Gene Description** CD40 ligand

**Gene Ontology** [Hyperlink](#)

**Gene Summary** member 5

**Other Designations** OTTMUSP00000019349|tumor necrosis factor (ligand) superfamily, member 5

## Publication Reference

- [An essential role for gp39, the ligand for CD40, in thymic selection.](#)

Foy TM, Page DM, Waldschmidt TJ, Schoneveld A, Laman JD, Masters SR, Tygrett L, Ledbetter JA, Aruffo A, Claassen E, Xu JC, Flavell RA, Oehen S, Hedrick SM, Noelle RJ.

The Journal of Experimental Medicine 1995 Nov; 182(5):1377.

Application: Flow Cyt, Func, Mouse, Mouse T cells, Mouse thymocytes

- [In vivo CD40-gp39 interactions are essential for thymus-dependent humoral immunity. II. Prolonged suppression of the humoral immune response by an antibody to the ligand for CD40, gp39.](#)

Foy TM, Shepherd DM, Durie FH, Aruffo A, Ledbetter JA, Noelle RJ.

The Journal of Experimental Medicine 1993 Nov; 178(5):1567.

Application: ELISA, Func, Mouse, Mouse serum

- [The CD40 ligand, gp39, is defective in activated T cells from patients with X-linked hyper-IgM syndrome.](#)

Aruffo A, Farrington M, Hollenbaugh D, Li X, Milatovich A, Nonoyama S, Bajorath J, Grosmaire LS, Stenkamp R, Neubauer M, et al..

Cell 1993 Jan; 72(2):291.

Application: Flow Cyt, IP, Human, Monkey, COS cells, Human T cells