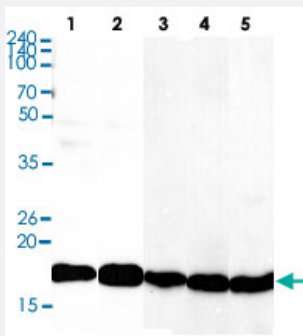


CFL1 monoclonal antibody, clone AT1C1

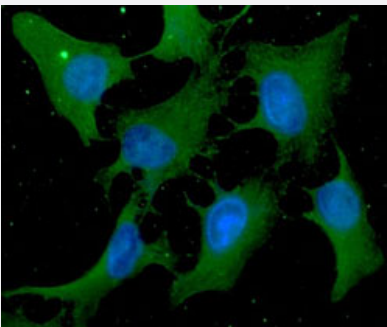
Catalog # MAB3208 Size 100 uL

Applications



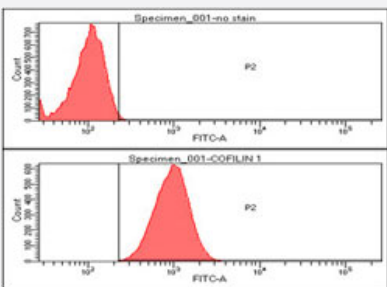
Western Blot (Cell lysate)

Western blot analysis of Lane 1: HeLa cell lysate, Lane 2: K562 cell lysate, Lane 3: MCF7 cell lysate, Lane 4: LnCap cell lysate, Lane 5: PC3 cell lysate.



Immunofluorescence

Immunofluorescence analysis of HeLa cells. The cell was stained with CFL1 monoclonal antibody, clone AT1C1 (1:100). The secondary antibody (green) was used Alexa Fluor 488. DAPI was stained the cell nucleus (blue).



Flow Cytometry

Flow cytometric analysis of HeLa cell line, staining at 2-5 ug for 1x10⁶ cells. The secondary antibody used goat anti-mouse IgG Alexa fluor 488 conjugate.

Specification

Product Description

Mouse monoclonal antibody raised against partial recombinant CFL1.

Immunogen

Recombinant protein corresponding to amino acids 1-166 of human CFL1.

Host	Mouse
Reactivity	Human
Form	Liquid
Purification	Protein G purification
Isotype	IgG1, kappa
Recommend Usage	ELISA Flow Cytometry Immunocytochemistry Immunofluorescence Western Blot The optimal working dilution should be determined by the end user.
Storage Buffer	In PBS, pH 7.4 (10% glycerol, 0.02% sodium azide).
Storage Instruction	Store at 2°C to 8°C for 1 week. For long term storage, aliquot and store at -20°C to -80°C. Aliquot to avoid repeated freezing and thawing.
Note	This product contains sodium azide: a POISONOUS AND HAZARDOUS SUBSTANCE which should be handled by trained staff only.

Applications

- Western Blot (Cell lysate)

Western blot analysis of Lane 1: HeLa cell lysate, Lane 2: K562 cell lysate, Lane 3: MCF7 cell lysate, Lane 4: LnCap cell lysate, Lane 5: PC3 cell lysate.

- Immunocytochemistry

- Immunofluorescence

Immunofluorescence analysis of HeLa cells. The cell was stained with CFL1 monoclonal antibody, clone AT1C1 (1:100). The secondary antibody (green) was used Alexa Fluor 488. DAPI was stained the cell nucleus (blue).

- Enzyme-linked Immunoabsorbent Assay

- Flow Cytometry

Flow cytometric analysis of HeLa cell line, staining at 2-5 ug for 1×10^6 cells. The secondary antibody used goat anti-mouse IgG Alexa fluor 488 conjugate.

Gene Info — CFL1

Entrez GeneID [1072](#)

Protein Accession# [NP_005498](#)

Gene Name CFL1

Gene Alias CFL

Gene Description cofilin 1 (non-muscle)

Omim ID [601442](#)

Gene Ontology [Hyperlink](#)

Gene Summary Cofilin is a widely distributed intracellular actin-modulating protein that binds and depolymerizes filamentous F-actin and inhibits the polymerization of monomeric G-actin in a pH-dependent manner. It is involved in the translocation of actin-cofilin complex from cytoplasm to nucleus.[supplied by OMIM]

Other Designations -

Publication Reference

- [Mapping the ADF/cofilin binding site on monomeric actin by competitive cross-linking and peptide array: evidence for a second binding site on monomeric actin.](#)

Mannherz HG, Ballweber E, Galla M, Villard S, Granier C, Steegborn C, Schmidtman A, Jaquet K, Pope B, Weeds AG. Journal of Molecular Biology 2007 Feb; 366(3):745.

Application: WB, Recombinant protein

- [Global, in vivo, and site-specific phosphorylation dynamics in signaling networks.](#)

Olsen JV, Blagoev B, Gnäd F, Macek B, Kumar C, Mortensen P, Mann M. Cell 2006 Nov; 127(3):635.

- [Cofilin phosphorylation by LIM-kinase 1 and its role in Rac-mediated actin reorganization.](#)

Yang N, Higuchi O, Ohashi K, Nagata K, Wada A, Kangawa K, Nishida E, Mizuno K. Nature 1998 Jun; 393(6687):809.

Pathway

- [Axon guidance](#)
- [Fc gamma R-mediated phagocytosis](#)
- [Regulation of actin cytoskeleton](#)

Disease

- [Spinal Dysraphism](#)