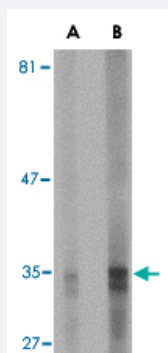


# ENDOG monoclonal antibody, clone 7G1G10

Catalog # MAB2759

Size 100 ug

## Applications



### Western Blot (Cell lysate)

Western blot analysis of ENDOG expression in HepG2 cell lysate with ENDOG monoclonal antibody, clone 7G1G10 (Cat # MAB2759) at (A) 5 and (B) 10 ug/mL .

## Specification

<b>Product Description</b>	Mouse monoclonal antibody raised against recombinant ENDOG.
<b>Immunogen</b>	Recombinant protein corresponding to amino acids 76-170 of human ENDOG.
<b>Host</b>	Mouse
<b>Reactivity</b>	Human, Rat
<b>Form</b>	Liquid
<b>Isotype</b>	IgG
<b>Recommend Usage</b>	Western Blot (5-10 ug/mL) The optimal working dilution should be determined by the end user.
<b>Storage Buffer</b>	In PBS (0.02% sodium azide)
<b>Storage Instruction</b>	Store at 4°C for three months. For long term storage store at -20°C. Aliquot to avoid repeated freezing and thawing.
<b>Note</b>	This product contains sodium azide: a POISONOUS AND HAZARDOUS SUBSTANCE which should be handled by trained staff only.

## Applications

- Western Blot (Cell lysate)

Western blot analysis of ENDOG expression in HepG2 cell lysate with ENDOG monoclonal antibody, clone 7G1G10 (Cat # MAB2759) at (A) 5 and (B) 10 ug/mL .

## Gene Info — ENDOG

Entrez GeneID	<a href="#">2021</a>
Protein Accession#	<a href="#">n/a</a>
Gene Name	ENDOG
Gene Alias	FLJ27463
Gene Description	endonuclease G
Omim ID	<a href="#">600440</a>
Gene Ontology	<a href="#">Hyperlink</a>
Gene Summary	The protein encoded by this gene is a nuclear encoded endonuclease that is localized in the mitochondrion. The encoded protein is widely distributed among animals and cleaves DNA at GC tracts. This protein is capable of generating the RNA primers required by DNA polymerase gamma to initiate replication of mitochondrial DNA. [provided by RefSeq]
Other Designations	OTTHUMP00000022301

## Publication Reference

- [Apoptosis. DNA destroyers.](#)

Hengartner MO.

Nature 2001 Jul; 412(6842):27.

- [Mitochondrial endonuclease G is important for apoptosis in C. elegans.](#)

Parrish J, Li L, Klotz K, Ledwich D, Wang X, Xue D.

Nature 2001 Jul; 412(6842):90.

- [Endonuclease G is an apoptotic DNase when released from mitochondria.](#)

Li LY, Luo X, Wang X.

Nature 2001 Jul; 412(6842):95.

## Pathway

- [Apoptosis](#)