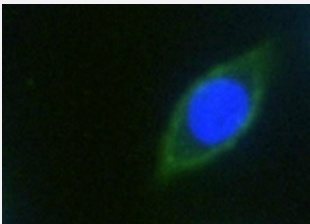


# EPCAM monoclonal antibody (Alexa 488)

Catalog # MAB23674-M01

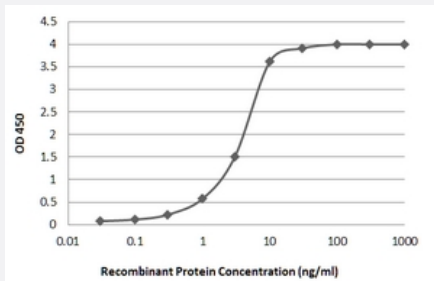
Size 50 ug

## Applications



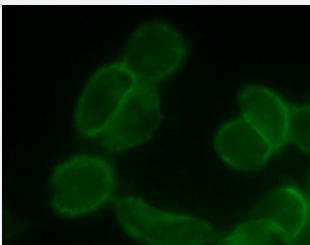
### Immunofluorescence

Immunofluorescence staining performed on CTCs from the patient recovered by SuperSlide™. EPCAM was detected via green signal (Alexa 488).



### Sandwich ELISA

Sandwich ELISA performed with EPCAM recombinant protein and EPCAM monoclonal antibody (Alexa 488)



### Immunofluorescence

Immunofluorescence staining performed on PC-3 cells using EPCAM monoclonal antibody (Alexa 488) (10 ug/mL).

## Specification

### Product Description

Alexa 488 conjugated mouse EPCAM monoclonal antibody.

### Amenable Platform

[LiquidCell™ negative enrichment cell isolation](#)

Immunogen	Human recombinant EPCAM
Host	Mouse
Form	Liquid
Conjugation	Alexa 488
Concentration	0.5 mg/mL
Isotype	IgG1
Available Test	16 assays
Quality Control Testing	<p>Results</p> <p>Sandwich ELISA</p> <p>Sandwich ELISA performed with EPCAM recombinant protein and EPCAM monoclonal antibody (Alexa 488)</p> <p>Immunofluorescence</p> <p>Immunofluorescence staining performed on PC-3 cells using EPCAM monoclonal antibody (Alexa 488) (10 ug/mL).</p>
Recommend Usage	<p>Immunofluorescence (10 ug/mL)</p> <p>LiquidCell™ SuperSlide™ (6 uL per slide)</p>
Regulatory Status	Research Use Only
Storage Buffer	In 1x PBS, pH 7.4
Storage Instruction	Store at 2-8°C. Do not freeze.
Instrument Compatibility	Ventana™ BenchMark Stainer

## Applications

- Immunofluorescence

Immunofluorescence staining performed on CTCs from the patient recovered by SuperSlide™. EPCAM was detected via green signal (Alexa 488).

## Gene Info — EPCAM

Entrez GeneID	<a href="#">4072</a>
Gene Name	EPCAM

Gene Alias	17-1A, 323/A3, CD326, CO-17A, CO17-1A, EGP, EGP-2, EGP34, EGP40, ESA, Ep-CAM, GA733-2, HEA125, KS1/4, KSA, M4S1, MH99, MIC18, MK-1, MOC31, TACST-1, TACSTD1, TROP1, hEGP-2
Gene Description	epithelial cell adhesion molecule
Omim ID	<a href="#">185535</a>
Gene Ontology	<a href="#">Hyperlink</a>
Gene Summary	<p>This gene encodes a carcinoma-associated antigen and is a member of a family that includes at least two type I membrane proteins. This antigen is expressed on most normal epithelial cells and gastrointestinal carcinomas and functions as a homotypic calcium-independent cell adhesion molecule. The antigen is being used as a target for immunotherapy treatment of human carcinomas. Mutations in this gene result in congenital tufting enteropathy. [provided by RefSeq]</p>
Other Designations	adenocarcinoma-associated antigen carcinoma-associated antigen GA733-2 human epithelial glycoprotein-2 membrane component, chromosome 4, surface marker (35kD glycoprotein) tumor-associated calcium signal transducer 1

## Disease

- [Genetic Predisposition to Disease](#)
- [Ovarian Neoplasms](#)