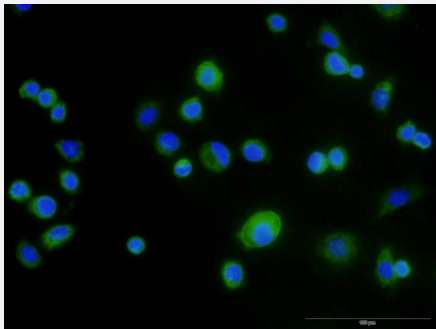


Anti-EPCAM monoclonal antibody (Biotin)

Catalog # MAB23665-M01

Size 50 ug

Applications



Immunofluorescence

Immunofluorescence staining on SK-BR-3 cells using Anti-EPCAM monoclonal antibody (Biotin) and FITC conjugated secondary antibody shows positive result.

Specification

Product Description	Anti-EPCAM monoclonal antibody (Biotin) is a biotin-conjugated monoclonal antibody for identification of cells expressing the EPCAM antigen.
Immunogen	EPCAM (NP_002345.1, 24 a.a. ~ 265 a.a) recombinant protein with His-FLAG-Strep II tag.
Clone Name	2F10
Host	Mouse
Specificity	This antibody reacts with human EpCAM.
Conjugation	Biotin
Isotype	IgG1, kappa
Storage Buffer	In 1x PBS, pH 7.4
Storage Instruction	Store at 2-8°C.

Applications

- Immunofluorescence

Immunofluorescence staining on SK-BR-3 cells using Anti-EPCAM monoclonal antibody (Biotin) and FITC conjugated secondary antibody shows positive result.

Gene Info — EPCAM

Entrez GeneID	4072
Gene Name	EPCAM
Gene Alias	17-1A, 323/A3, CD326, CO-17A, CO17-1A, EGP, EGP-2, EGP34, EGP40, ESA, Ep-CAM, GA733-2, HEA125, KS1/4, KSA, M4S1, MH99, MIC18, MK-1, MOC31, TACST-1, TACSTD1, TROP1, hEGP-2
Gene Description	epithelial cell adhesion molecule
Omim ID	185535
Gene Ontology	Hyperlink
Gene Summary	This gene encodes a carcinoma-associated antigen and is a member of a family that includes at least two type I membrane proteins. This antigen is expressed on most normal epithelial cells and gastrointestinal carcinomas and functions as a homotypic calcium-independent cell adhesion molecule. The antigen is being used as a target for immunotherapy treatment of human carcinomas. Mutations in this gene result in congenital tufting enteropathy. [provided by RefSeq]
Other Designations	adenocarcinoma-associated antigen carcinoma-associated antigen GA733-2 human epithelial glycoprotein-2 membrane component, chromosome 4, surface marker (35kD glycoprotein) tumor-associated calcium signal transducer 1

Disease

- [Genetic Predisposition to Disease](#)
- [Ovarian Neoplasms](#)