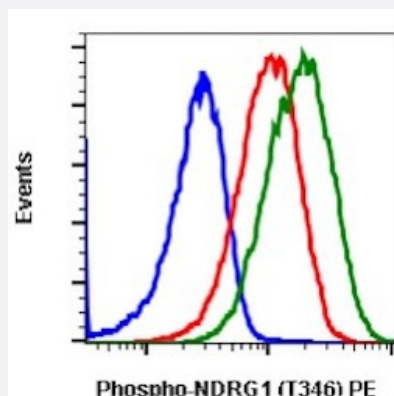


NDRG1 (phospho T346) monoclonal antibody, clone F5 (PE)

Catalog # MAB23438 Size 100 Reactions

Applications



Flow Cytometry

Flow cytometric analysis of THP-1 cells with NDRG1 (phospho T346) monoclonal antibody, clone F5 (PE) (Cat # MAB23438). Unstained and untreated as negative control (blue) or stained and untreated (red) or stained and treated with IFN α plus IL-4 and pervanadate (green).

Specification

Product Description	Rabbit monoclonal antibody raised against synthetic phosphopeptide of human NDRG1.
Immunogen	A synthetic phosphopeptide corresponding to residues surrounding T346 of human NDRG1.
Host	Rabbit
Reactivity	Human, Mouse
Form	Liquid
Conjugation	PE
Purification	Protein A/G purification
Isotype	IgG1, kappa
Recommend Usage	Flow Cytometry (5 μ L/ 10^6 cells) The optimal working dilution should be determined by the end user.
Storage Buffer	In PBS, pH 7.4 (0.2% BSA, 0.09% sodium azide).

Storage Instruction

Store at 4°C.

Note

This product contains sodium azide: a POISONOUS AND HAZARDOUS SUBSTANCE which should be handled by trained staff only.

Applications

- Flow Cytometry

Flow cytometric analysis of THP-1 cells with NDRG1 (phospho T346) monoclonal antibody, clone F5 (PE) (Cat # MAB23438). Unstained and untreated as negative control (blue) or stained and untreated (red) or stained and treated with IFN α plus IL-4 and pervanadate (green).

Gene Info — NDRG1

Entrez GeneID[10397](#)**Gene Name**

NDRG1

Gene Alias

CAP43, CMT4D, DRG1, GC4, HMSNL, NDR1, NMSL, PROXY1, RIT42, RTP, TARG1, TDD5

Gene Description

N-myc downstream regulated 1

Omim ID[601455](#) [605262](#)**Gene Ontology**[Hyperlink](#)**Gene Summary**

This gene is a member of the N-myc downregulated gene family which belongs to the alpha/beta hydrolase superfamily. The protein encoded by this gene is a cytoplasmic protein involved in stress responses, hormone responses, cell growth, and differentiation. It is necessary for p53-mediated caspase activation and apoptosis. Mutation in this gene has been reported to be causative for hereditary motor and sensory neuropathy-Lom. Multiple alternatively spliced variants, encoding the same protein, have been identified. [provided by RefSeq]

Other Designations

differentiation-related gene 1 protein|nickel-specific induction protein Cap43|protein regulated by oxygen-1|reducing agents and tunicamycin-responsive protein|tunicamycin-responsive protein

Disease

- [Alzheimer disease](#)
- [Charcot-Marie-Tooth Disease](#)
- [Cognition](#)

- [Colorectal Neoplasms](#)
- [Deafness](#)
- [Genetic Predisposition to Disease](#)
- [Tobacco Use Disorder](#)