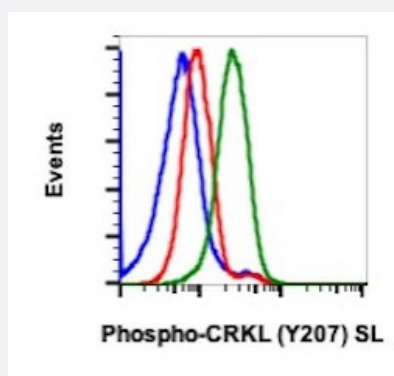


CRKL (phospho Y207) monoclonal antibody, clone G4 (SureLight 488)

Catalog # MAB23434 Size 100 Reactions

Applications



Flow Cytometry

Flow cytometric analysis of K-562 cells with CRKL (phospho Y207) monoclonal antibody, clone G4 (SureLight 488) (Cat # MAB23434). Unstained treated with imatinib as negative control (blue) or stained treated with imatinib (red) or treated with pervanadate (green).

Specification

Product Description	Rabbit monoclonal antibody raised against synthetic phosphopeptide of human CRKL.
Immunogen	A synthetic phosphopeptide corresponding to residues surrounding Y207 of human CRKL.
Host	Rabbit
Reactivity	Human, Mouse
Form	Liquid
Conjugation	SureLight 488
Purification	Protein A/G purification
Isotype	IgG1, kappa
Recommend Usage	Flow Cytometry (5 μ L/ 10^6 cells) The optimal working dilution should be determined by the end user.
Storage Buffer	In PBS, pH 7.4 (0.2% BSA, 0.09% sodium azide).

Storage Instruction

Store at 4°C.

Note

This product contains sodium azide: a POISONOUS AND HAZARDOUS SUBSTANCE which should be handled by trained staff only.

Applications

- Flow Cytometry

Flow cytometric analysis of K-562 cells with CRKL (phospho Y207) monoclonal antibody, clone G4 (SureLight 488) (Cat # MAB23434). Unstained treated with imatinib as negative control (blue) or stained treated with imatinib (red) or treated with pervanadate (green).

Gene Info — CRKL

Entrez GeneID
[1399](#)
Gene Name

CRKL

Gene Alias

-

Gene Description

v-crk sarcoma virus CT10 oncogene homolog (avian)-like

Omim ID
[602007](#)
Gene Ontology
[Hyperlink](#)
Gene Summary

This gene encodes a protein kinase containing SH2 and SH3 (src homology) domains which has been shown to activate the RAS and JUN kinase signaling pathways and transform fibroblasts in a RAS-dependent fashion. It is a substrate of the BCR-ABL tyrosine kinase, plays a role in fibroblast transformation by BCR-ABL, and may be oncogenic

Other Designations

v-crk avian sarcoma virus CT10 oncogene homolog-like

Pathway

- [Chemokine signaling pathway](#)
- [Chronic myeloid leukemia](#)
- [ErbB signaling pathway](#)
- [Fc gamma R-mediated phagocytosis](#)

- [Focal adhesion](#)
- [Insulin signaling pathway](#)
- [MAPK signaling pathway](#)
- [Neurotrophin signaling pathway](#)
- [Pathways in cancer](#)
- [Regulation of actin cytoskeleton](#)
- [Renal cell carcinoma](#)

Disease

- [Cardiovascular Diseases](#)
- [Diabetes Mellitus](#)
- [Edema](#)