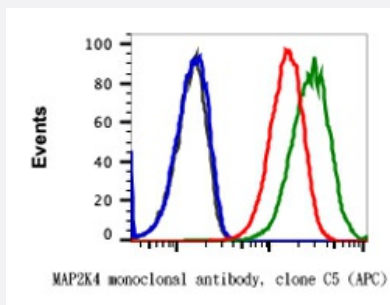


MAP2K4 (phospho S257) monoclonal antibody, clone C5 (APC)

Catalog # MAB23399 Size 100 Reactions

Applications



Flow Cytometry

Flow cytometric analysis of 293T cells with MAP2K4 (phospho Ser257) monoclonal antibody, clone C5 (APC)(Cat # MAB23399).

Specification

Product Description	Rabbit monoclonal antibody raised against synthetic phosphopeptide of human MAP2K4.
Immunogen	A synthetic phospho-peptide corresponding to residues surrounding Ser257 of human phospho SEK 1/MKK4
Host	Rabbit
Reactivity	Human
Form	Liquid
Conjugation	APC
Isotype	IgG1, kappa
Recommend Usage	Flow Cytometry (5 uL/million cells) The optimal working dilution should be determined by the end user.
Storage Buffer	In PBS (0.09% NaN ₃ , 0.2% BSA)
Storage Instruction	Store at 4°C. Do not freeze.

Note

This product contains sodium azide: a POISONOUS AND HAZARDOUS SUBSTANCE which should be handled by trained staff only.

Applications

- Flow Cytometry

Flow cytometric analysis of 293T cells with MAP2K4 (phospho Ser257) monoclonal antibody, clone C5 (APC)(Cat # MAB23399).

Gene Info — MAP2K4

Entrez GeneID [6416](#)

Protein Accession# [P45985](#)

Gene Name MAP2K4

Gene Alias JNKK, JNKK1, MAPKK4, MEK4, MKK4, PRKMK4, SEK1, SERK1

Gene Description mitogen-activated protein kinase kinase 4

Omim ID [601335](#)

Gene Ontology [Hyperlink](#)

Gene Summary This gene encodes a dual specificity protein kinase that belongs to the Ser/Thr protein kinase family. This kinase is a direct activator of MAP kinases in response to various environmental stresses or mitogenic stimuli. It has been shown to activate MAPK8/JNK1, MAPK9/JNK2, and MAPK14/p38, but not MAPK1/ERK2 or MAPK3/ERK3. This kinase is phosphorylated, and thus activated by MAP3K1/MEKK. The knockout studies in mice suggested the roles of this kinase in mediating survival signal in T cell development, as well as in the organogenesis of liver. [provided by RefSeq]

Other Designations JNK activating kinase 1|JNK-activated kinase 1|MAP kinase kinase 4|MAPK/ERK kinase 4|SAPK/ERK kinase 1|c-Jun N-terminal kinase kinase 1|dual specificity mitogen-activated protein kinase 4

Pathway

- [Epithelial cell signaling in Helicobacter pylori infection](#)
- [ErbB signaling pathway](#)
- [Fc epsilon RI signaling pathway](#)

- [GnRH signaling pathway](#)
- [MAPK signaling pathway](#)
- [Toll-like receptor signaling pathway](#)

Disease

- [Colorectal Neoplasms](#)
- [Genetic Predisposition to Disease](#)
- [Lung Neoplasms](#)
- [Pancreatic cancer](#)
- [Pancreatic Neoplasms](#)