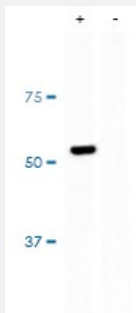


# CRISPR-Cas9 monoclonal antibody, clone 6F7

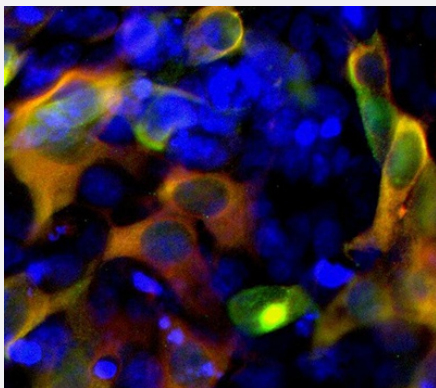
Catalog # MAB23335      Size 100 uL

## Applications



### Western Blot (Transfected lysate)

Western blot analysis of CRISPR-Cas9 monoclonal antibody, clone 6F7 transfected HEK293 cell lysate (+) showing specific immunolabeling of the ~53 kDa. Labeling is absent in the untransfected lysate (-).



### Immunofluorescence

Immunofluorescence staining of CRISPR-Cas9 monoclonal antibody, clone 6F7 transfected with a fusion construct of GFP with the C-terminal region of S. aureus Cas 9 protein (green) and the DNA stained blue with DAPI. The yellow label is the overlapping of the CRISPR-Cas9 monoclonal antibody and the Cas9-GFP construct.

## Specification

**Product Description** Mouse monoclonal antibody raised against recombinant cas9 protein.

**Host** Mouse

**Reactivity** Staphylococcus

**Form** Liquid

**Purification** Protein G purification

<b>Recommend Usage</b>	CRISPR Genome editing Immunofluorescence (1:500) Immunohistochemistry (1:1000) Western Blot The optimal working dilution should be determined by the end user.
<b>Storage Buffer</b>	In PBS (50% Glycerol)
<b>Storage Instruction</b>	Store at -20°C. Aliquot to avoid repeated freezing and thawing.
<b>Note</b>	This product contains sodium azide: a POISONOUS AND HAZARDOUS SUBSTANCE which should be handled by trained staff only.

## Applications

- Western Blot (Transfected lysate)

Western blot analysis of CRISPR-Cas9 monoclonal antibody, clone 6F7 transfected HEK293 cell lysate (+) showing specific immunolabeling of the ~53 kDa. Labeling is absent in the untransfected lysate (-).

- Immunofluorescence

Immunofluorescence staining of CRISPR-Cas9 monoclonal antibody, clone 6F7 transfected with a fusion construct of GFP with the C-terminal region of S. aureus Cas 9 protein (green) and the DNA stained blue with DAPI. The yellow label is the overlapping of the CRISPR-Cas9 monoclonal antibody and the Cas9-GFP construct.

- CRISPR Genomic Editing