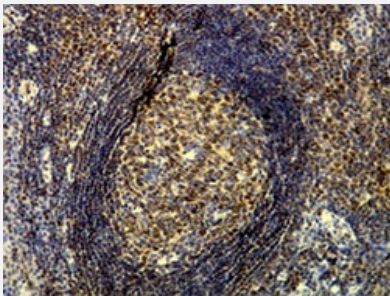


CHAF1B monoclonal antibody, clone E17-L

Catalog # MAB23305

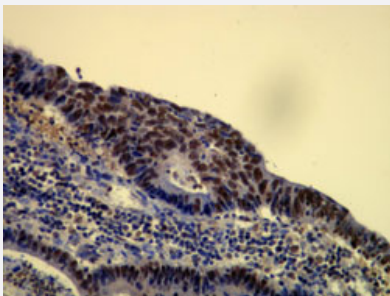
Size 7 mL

Applications



Immunohistochemistry (Formalin/PFA-fixed paraffin-embedded sections)

Immunohistochemical staining (Formalin-fixed paraffin-embedded sections) of human lymph node with CHAF1B monoclonal antibody, clone E17-L (Cat # MAB23305).



Immunohistochemistry (Formalin/PFA-fixed paraffin-embedded sections)

Immunohistochemical staining (Formalin-fixed paraffin-embedded sections) of human colon adenocarcinoma with CHAF1B monoclonal antibody, clone E17-L (Cat # MAB23305).

Specification

Product Description	Rabbit monoclonal antibody raised against synthetic peptide of human CHAF1B.
Immunogen	A synthetic peptide corresponding to C-terminus of human CHAF1B.
Host	Rabbit
Reactivity	Human
Form	Liquid
Purification	immunoaffinity purification

Recommend Usage	Immunohistochemistry (1:100-1:200) The optimal working dilution should be determined by the end user.
Storage Buffer	In 20 mM Tris-HCl buffer, pH 8.0 (20 mg/mL BSA, 0.05% Sodium Azide).
Storage Instruction	Store at 4°C. Do not freeze.
Note	This product contains sodium azide: a POISONOUS AND HAZARDOUS SUBSTANCE which should be handled by trained staff only.

Applications

- Immunohistochemistry (Formalin/PFA-fixed paraffin-embedded sections)

Immunohistochemical staining (Formalin-fixed paraffin-embedded sections) of human lymph node with CHAF1B monoclonal antibody, clone E17-L (Cat # MAB23305).

- Immunohistochemistry (Formalin/PFA-fixed paraffin-embedded sections)

Immunohistochemical staining (Formalin-fixed paraffin-embedded sections) of human colon adenocarcinoma with CHAF1B monoclonal antibody, clone E17-L (Cat # MAB23305).

Gene Info — CHAF1B

Entrez GeneID	8208
Protein Accession#	Q13112
Gene Name	CHAF1B
Gene Alias	CAF-1, CAF-IP60, CAF1, CAF1A, CAF1P60, MPHOSPH7, MPP7
Gene Description	chromatin assembly factor 1, subunit B (p60)
Omim ID	601245
Gene Ontology	Hyperlink

Gene Summary	Chromatin assembly factor I (CAF-I) is required for the assembly of histone octamers onto newly-replicated DNA. CAF-I is composed of three protein subunits, p50, p60, and p150. The protein encoded by this gene corresponds to the p60 subunit and is required for chromatin assembly after replication. The encoded protein is differentially phosphorylated in a cell cycle-dependent manner. In addition, it is normally found in the nucleus except during mitosis, when it is released into the cytoplasm. This protein is a member of the WD-repeat HIR1 family and may also be involved in DNA repair. [provided by RefSeq]
---------------------	--

Other Designations

CAF-1 subunit B|CAF-I 60 kDa subunit|M-phase phosphoprotein 7|chromatin assembly factor 1 subunit B|chromatin assembly factor I p60 subunit|human chromatin assembly factor-I p60 subunit
