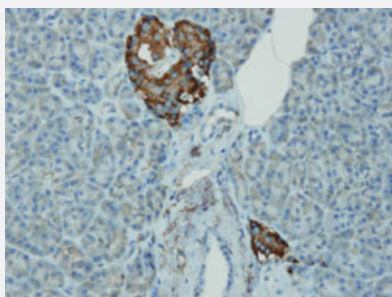


CHGA monoclonal antibody, clone N28-A

Catalog # MAB23301

Size 7 mL

Applications



Immunohistochemistry (Formalin/PFA-fixed paraffin-embedded sections)

Immunohistochemical staining (Formalin-fixed paraffin-embedded sections) of human islet (islets of Langerhans) with CHGA monoclonal antibody, clone N28-A (Cat # MAB23301).

Specification

Product Description	Rabbit monoclonal antibody raised against synthetic peptide of human CHGA.
Immunogen	A synthetic peptide corresponding to C-terminus of human CHGA.
Host	Rabbit
Reactivity	Human
Form	Liquid
Purification	immunoaffinity purification
Recommend Usage	Immunohistochemistry (1:100-1:200) The optimal working dilution should be determined by the end user.
Storage Buffer	In 20 mM Tris-HCl buffer, pH 8.0 (20 mg/mL BSA, 0.05% Sodium Azide).
Storage Instruction	Store at 4°C. Do not freeze.
Note	This product contains sodium azide: a POISONOUS AND HAZARDOUS SUBSTANCE which should be handled by trained staff only.

Applications

- Immunohistochemistry (Formalin/PFA-fixed paraffin-embedded sections)

Immunohistochemical staining (Formalin-fixed paraffin-embedded sections) of human islet (islets of Langerhans) with CHGA monoclonal antibody, clone N28-A (Cat # MAB23301).

Gene Info — CHGA

Entrez GeneID [1113](#)

Protein Accession# [P10645](#)

Gene Name CHGA

Gene Alias CGA

Gene Description chromogranin A (parathyroid secretory protein 1)

Omim ID [118910](#)

Gene Ontology [Hyperlink](#)

Gene Summary The protein encoded by this gene is a member of the chromogranin/secretogranin family of neuro endocrine secretory proteins. It is found in secretory vesicles of neurons and endocrine cells. This gene product is a precursor to three biologically active peptides; vasostatin, pancreastatin, and parastatin. These peptides act as autocrine or paracrine negative modulators of the neuroendocrine system. Other peptides, including chromostatin, beta-granin, WE-14 and GE-25, are also derived from the full-length protein. However, biological activities for these molecules have not been shown. [provided by RefSeq]

Other Designations betagranin (N-terminal fragment of chromogranin A)|chromogranin A|parathyroid secretory protein 1

Disease

- [Genetic Predisposition to Disease](#)
- [Glomerulonephritis](#)
- [Hypertension](#)
- [Kidney Failure](#)
- [Prostatic Neoplasms](#)
- [Schizophrenia](#)