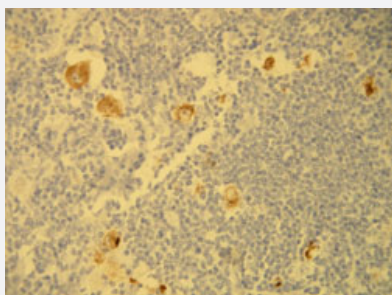


LMP-1 monoclonal antibody, clone S20-D

Catalog # MAB23271

Size 7 mL

Applications



Immunohistochemistry (Formalin/PFA-fixed paraffin-embedded sections)

Immunohistochemical staining (Formalin-fixed paraffin-embedded sections) of Hodgkin's lymphoma with LMP1 monoclonal antibody, clone S20-D (Cat # MAB23271).

Specification

Product Description	Rabbit monoclonal antibody raised against synthetic peptide of human LMP-1.
Immunogen	A synthetic peptide corresponding to C-terminus of Epstein-Barr virus, Latent Membrane Protein-1.
Host	Rabbit
Reactivity	Human
Form	Liquid
Purification	immunoaffinity purification
Recommend Usage	Immunohistochemistry (1:100-1:200) The optimal working dilution should be determined by the end user.
Storage Buffer	In 20 mM Tris-HCl buffer, pH 8.0 (20 mg/mL BSA, 0.05% Sodium Azide).
Storage Instruction	Store at 4°C. Do not freeze.
Note	This product contains sodium azide: a POISONOUS AND HAZARDOUS SUBSTANCE which should be handled by trained staff only.

Applications

- Immunohistochemistry (Formalin/PFA-fixed paraffin-embedded sections)

Immunohistochemical staining (Formalin-fixed paraffin-embedded sections) of Hodgkin's lymphoma with LMP1 monoclonal antibody, clone S20-D (Cat # MAB23271).

Gene Info — LMP-1

Entrez GeneID	3783750
---------------	-------------------------

Protein Accession#	P03230
--------------------	------------------------

Gene Name	LMP-1
-----------	-------

Gene Alias	-
------------	---

Gene Description	LMP-1
------------------	-------

Gene Ontology	Hyperlink
---------------	---------------------------

Other Designations	-
--------------------	---