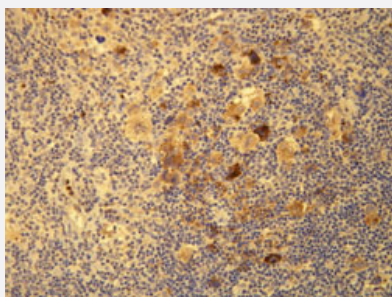


# LMP-1 monoclonal antibody, clone D24-G

Catalog # MAB23270

Size 7 mL

## Applications



### Immunohistochemistry (Formalin/PFA-fixed paraffin-embedded sections)

Immunohistochemical staining (Formalin-fixed paraffin-embedded sections) of Hodgkin's lymphoma with LMP1 monoclonal antibody, clone D24-G (Cat # MAB23270).

## Specification

|                            |  |
|----------------------------|--|
| <b>Product Description</b> | Rabbit monoclonal antibody raised against synthetic peptide of human LMP-1.  |
| <b>Immunogen</b>           | A synthetic peptide corresponding to internal region of Epstein-Barr virus, Latent Membrane Protein-1.                 |
| <b>Host</b>                | Rabbit   |
| <b>Reactivity</b>          | Human  |
| <b>Form</b>                | Liquid   |
| <b>Purification</b>        | immunoaffinity purification  |
| <b>Recommend Usage</b>     | Immunohistochemistry (1:100-1:200)<br>The optimal working dilution should be determined by the end user.               |
| <b>Storage Buffer</b>      | In 20 mM Tris-HCl buffer, pH 8.0 (20 mg/mL BSA, 0.05% Sodium Azide).   |
| <b>Storage Instruction</b> | Store at 4°C. Do not freeze.   |
| <b>Note</b>                | This product contains sodium azide: a POISONOUS AND HAZARDOUS SUBSTANCE which should be handled by trained staff only. |

## Applications

- Immunohistochemistry (Formalin/PFA-fixed paraffin-embedded sections)

Immunohistochemical staining (Formalin-fixed paraffin-embedded sections) of Hodgkin's lymphoma with LMP1 monoclonal antibody, clone D24-G (Cat # MAB23270).

## Gene Info — LMP-1

|               |                         |
|---------------|-------------------------|
| Entrez GeneID | <a href="#">3783750</a> |
|---------------|-------------------------|

|                    |                        |
|--------------------|------------------------|
| Protein Accession# | <a href="#">P03230</a> |
|--------------------|------------------------|

|           |       |
|-----------|-------|
| Gene Name | LMP-1 |
|-----------|-------|

|            |   |
|------------|---|
| Gene Alias | - |
|------------|---|

|                  |       |
|------------------|-------|
| Gene Description | LMP-1 |
|------------------|-------|

|               |                           |
|---------------|---------------------------|
| Gene Ontology | <a href="#">Hyperlink</a> |
|---------------|---------------------------|

|                    |   |
|--------------------|---|
| Other Designations | - |
|--------------------|---|