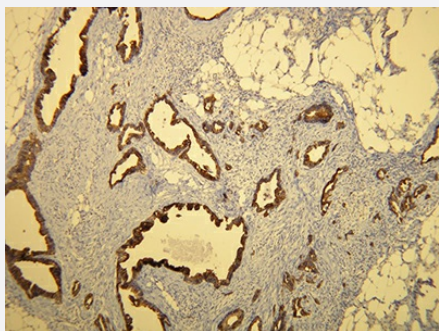


# KRT7 monoclonal antibody, clone R17-S

Catalog # MAB23266

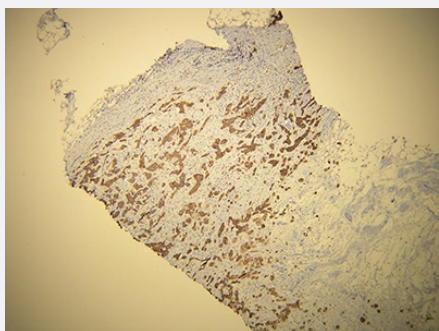
Size 7 mL

## Applications



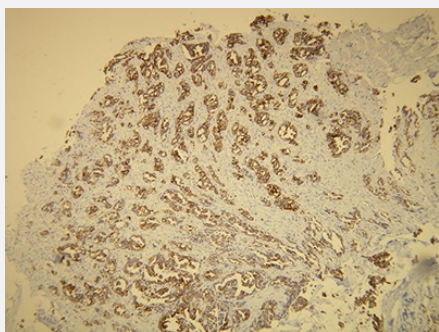
### Immunohistochemistry (Formalin/PFA-fixed paraffin-embedded sections)

Immunohistochemical staining (Formalin-fixed paraffin-embedded sections) of human pancreatic adenocarcinoma with KRT7 monoclonal antibody, clone R17-S (Cat # MAB23266)



### Immunohistochemistry (Formalin/PFA-fixed paraffin-embedded sections)

Immunohistochemical staining (Formalin-fixed paraffin-embedded sections) of human breast ductal carcinoma with KRT7 monoclonal antibody, clone R17-S (Cat # MAB23266)



### Immunohistochemistry (Formalin/PFA-fixed paraffin-embedded sections)

Immunohistochemical staining (Formalin-fixed paraffin-embedded sections) of human pulmonary adenocarcinoma with KRT7 monoclonal antibody, clone R17-S (Cat # MAB23266)

## Specification

### Product Description

Rabbit monoclonal antibody raised against synthetic peptide of human KRT7.

### Immunogen

A synthetic peptide corresponding to N-terminus of human KRT7.

Host	Rabbit
Reactivity	Human
Form	Liquid
Purification	Immunoaffinity purification
Recommend Usage	Immunohistochemistry (Formalin/PFA-fixed paraffin-embedded sections) (1:200) The optimal working dilution should be determined by the end user.
Storage Buffer	In 20 mM Tris-HCl, pH 8.0
Storage Instruction	Store at 4°C. Do not freeze.
Note	This product contains sodium azide: a POISONOUS AND HAZARDOUS SUBSTANCE which should be handled by trained staff only.

## Applications

- Immunohistochemistry (Formalin/PFA-fixed paraffin-embedded sections)

Immunohistochemical staining (Formalin-fixed paraffin-embedded sections) of human pancreatic adenocarcinoma with KRT7 monoclonal antibody, clone R17-S (Cat # MAB23266)

- Immunohistochemistry (Formalin/PFA-fixed paraffin-embedded sections)

Immunohistochemical staining (Formalin-fixed paraffin-embedded sections) of human breast ductal carcinoma with KRT7 monoclonal antibody, clone R17-S (Cat # MAB23266)

- Immunohistochemistry (Formalin/PFA-fixed paraffin-embedded sections)

Immunohistochemical staining (Formalin-fixed paraffin-embedded sections) of human pulmonary adenocarcinoma with KRT7 monoclonal antibody, clone R17-S (Cat # MAB23266)

## Gene Info — KRT7

Entrez GeneID	<a href="#">3855</a>
Protein Accession#	<a href="#">P08729</a>
Gene Name	KRT7
Gene Alias	CK7, K2C7, K7, MGC129731, MGC3625, SCL
Gene Description	keratin 7
Omim ID	<a href="#">148059</a>

## Gene Ontology

[Hyperlink](#)

## Gene Summary

The protein encoded by this gene is a member of the keratin gene family. The type II cytokeratins consist of basic or neutral proteins which are arranged in pairs of heterotypic keratin chains coexpressed during differentiation of simple and stratified epithelial tissues. This type II cytokeratin is specifically expressed in the simple epithelia lining the cavities of the internal organs and in the gland ducts and blood vessels. The genes encoding the type II cytokeratins are clustered in a region of chromosome 12q12-q13. Alternative splicing may result in several transcript variants; however, not all variants have been fully described. [provided by RefSeq]

## Other Designations

cytokeratin 7|keratin, 55K type II cytoskeletal|keratin, simple epithelial type I, K7|keratin, type II cytoskeletal 7|sarcolectin|type II mesothelial keratin K7