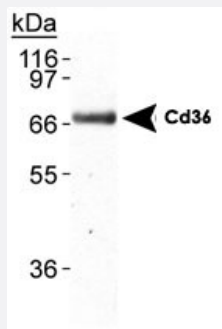


Cd36 monoclonal antibody, clone D-2712

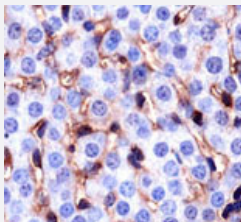
Catalog # MAB2325 Size 100 uL

Applications



Western Blot (Tissue lysate)

Detection of Cd36 in mouse adipose lysate using Cd36 monoclonal antibody, clone D-2712 (Cat # MAB2325).



Immunohistochemistry (Formalin/PFA-fixed paraffin-embedded sections)

Staining of Cd36 in mouse liver using Cd36 monoclonal antibody, clone D-2712 (Cat # MAB2325).

Specification

Product Description	Mouse monoclonal antibody raised against recombinant Cd36.
Immunogen	Recombinant protein corresponding to mouse Cd36.
Host	Mouse
Reactivity	Mouse, Rat
Specificity	Does not react with human.
Form	Liquid
Purification	Protein G purification

Isotype	IgA, kappa
Recommend Usage	Immunohistochemistry (1:100-1:250) Immunohistochemistry (Formalin/PFA-fixed paraffin-embedded sections) (1:100-1:250) Immunoprecipitation (10-20 ug) Western Blot (1:500) The optimal working dilution should be determined by the end user.
Storage Buffer	In PBS (0.05% sodium azide).
Storage Instruction	Store at 4°C for short term. For long term storage store at -20°C. Aliquot to avoid repeated freezing and thawing.
Note	This product contains sodium azide: a POISONOUS AND HAZARDOUS SUBSTANCE which should be handled by trained staff only.

Applications

- Western Blot (Tissue lysate)

Detection of Cd36 in mouse adipose lysate using Cd36 monoclonal antibody, clone D-2712 (Cat # MAB2325).

- Immunohistochemistry (Formalin/PFA-fixed paraffin-embedded sections)

Staining of Cd36 in mouse liver using Cd36 monoclonal antibody, clone D-2712 (Cat # MAB2325).

- Immunoprecipitation

Gene Info — Cd36

Entrez GeneID	12491
Protein Accession#	Q08857
Gene Name	Cd36
Gene Alias	FAT, GPV, Scarb3
Gene Description	CD36 antigen
Gene Ontology	Hyperlink
Other Designations	fatty acid translocase

Publication Reference

- [Lipid oversupply induces CD36 sarcolemmal translocation via dual modulation of PKC \$\zeta\$ and TBC1D1: an early event prior to insulin resistance.](#)

Zhu B, Li MY, Lin Q, Liang Z, Xin Q, Wang M, He Z, Wang X, Wu X, Chen GG, Tong PC, Zhang W, Liu LZ.

Theranostics 2020 Jan; 10(3):1332.

Application: IF, WB-Ti, Mouse, L6 muscle cells, Mouse skeletal muscle

- [Xanthophylls are preferentially taken up compared with beta-carotene by retinal cells via a SRBI-dependent mechanism.](#)

During A, Doraiswamy S, Harrison EH.

Journal of Lipid Research 2008 Aug; 49(8):1715.

Application: Func, Human, ARPE-19 cells

- [Targeted disruption of the class B scavenger receptor CD36 protects against atherosclerotic lesion development in mice.](#)

Febbraio M, Podrez EA, Smith JD, Hajjar DP, Hazen SL, Hoff HF, Sharma K, Silverstein RL.

The Journal of Clinical Investigation 2000 Apr; 105(8):1049.